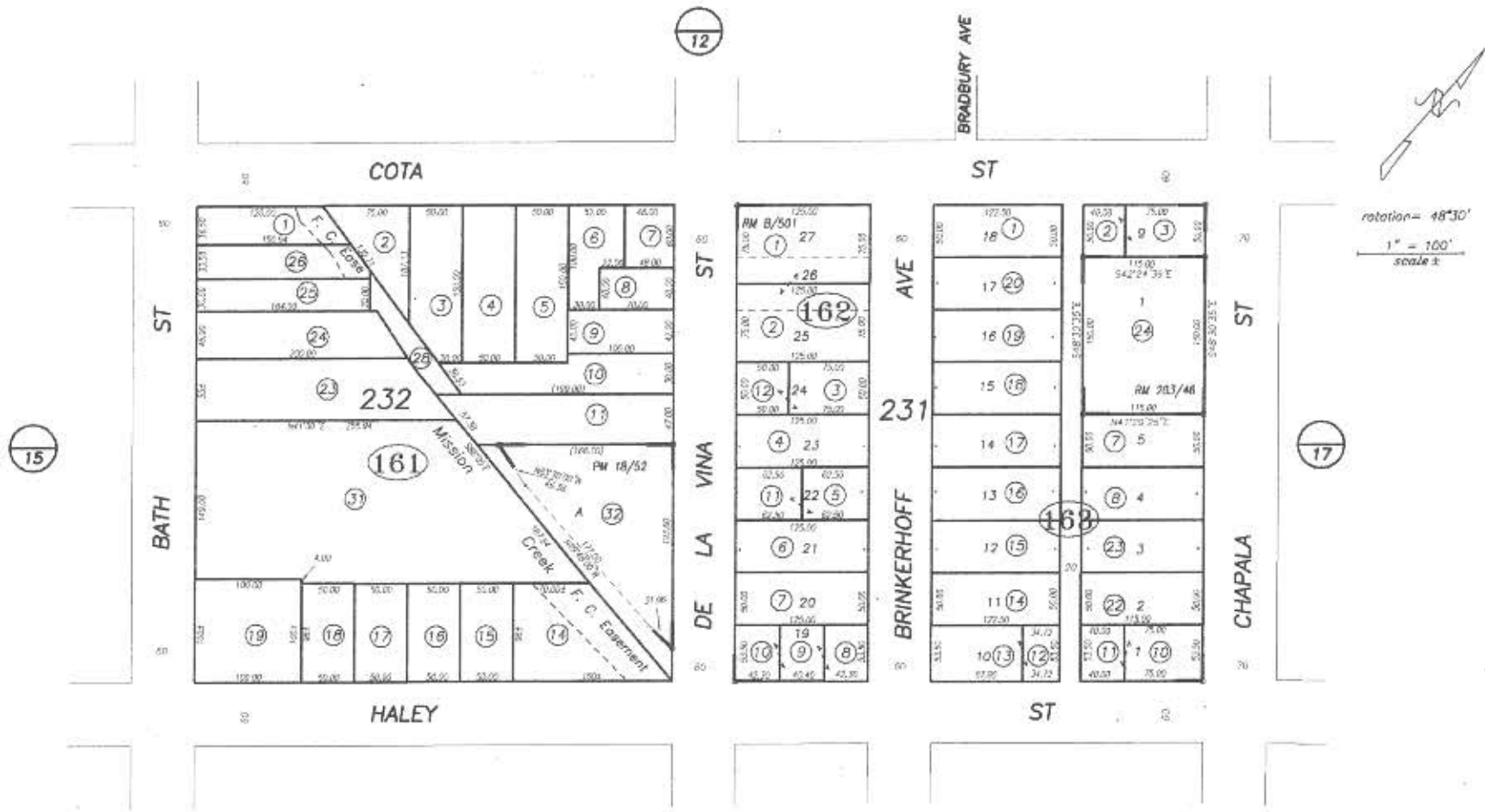


POR. PUEBLO LANDS

037-16



15

12

20

17

**NOTICE**  
 Assessor Parcels are for tax assessment purposes only and do not indicate either parcel legality or a valid building site.

City of Santa Barbara  
 Assessor's Map Bk, 037 -Pg, 16  
 County of Santa Barbara, Calif.

8/28/2007 R.M. Bk. 203, Pg. 46-47 , Tract 20727  
 / / R.M. Bk. B , Pg. 501 , Tract Subdivision of block 231

LD/08 1&1-04 & 21 Inz 24