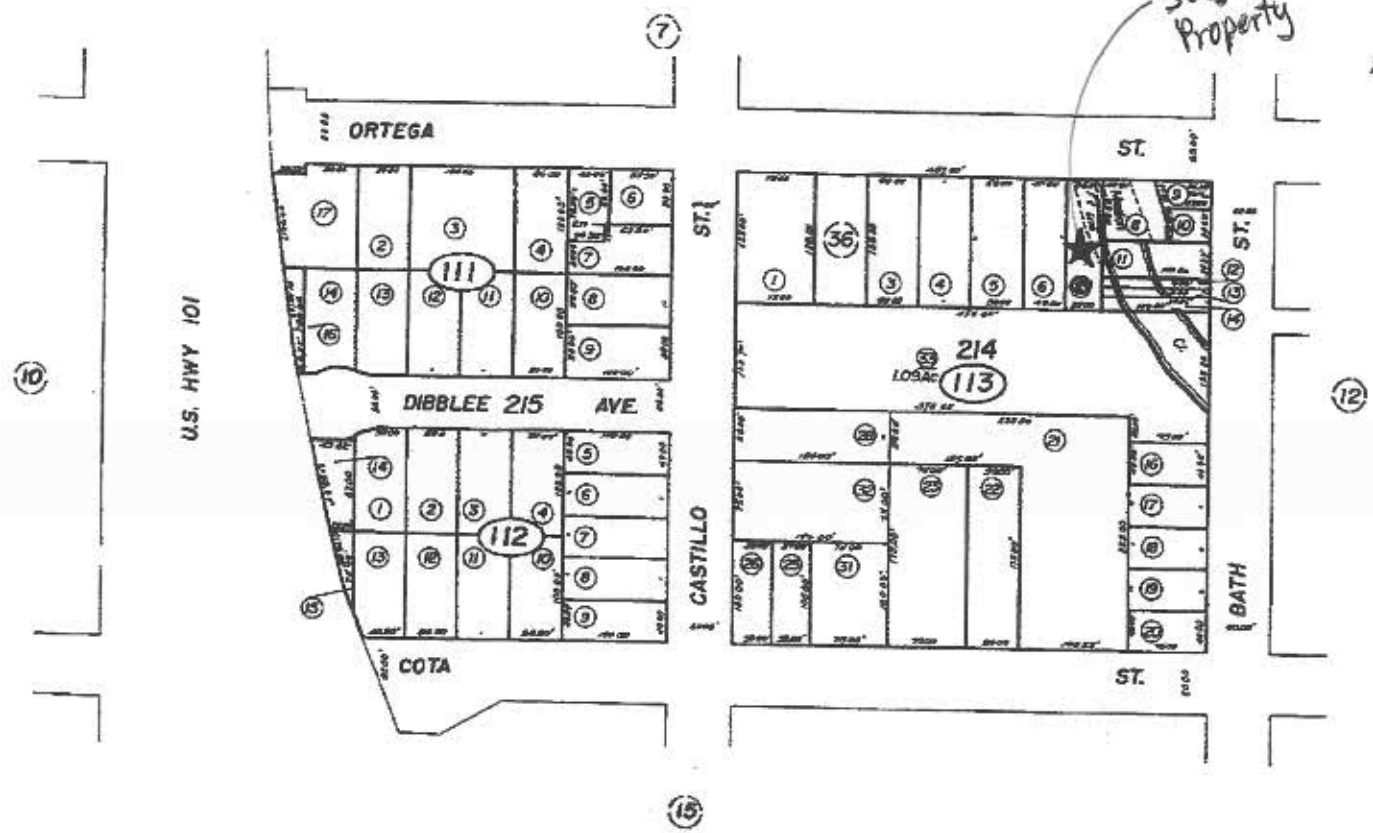


POR. PUEBLO LANDS

37-11

309 W. Ortega
Subject
Property



Assessor's Map Bk. 37 - Pg. 11
County of Santa Barbara, Calif.

NOTE - Assessor's Block Numbers Shown in Ellipses
Assessor's Parcel Numbers Shown in Circles

4/4 11/11/11