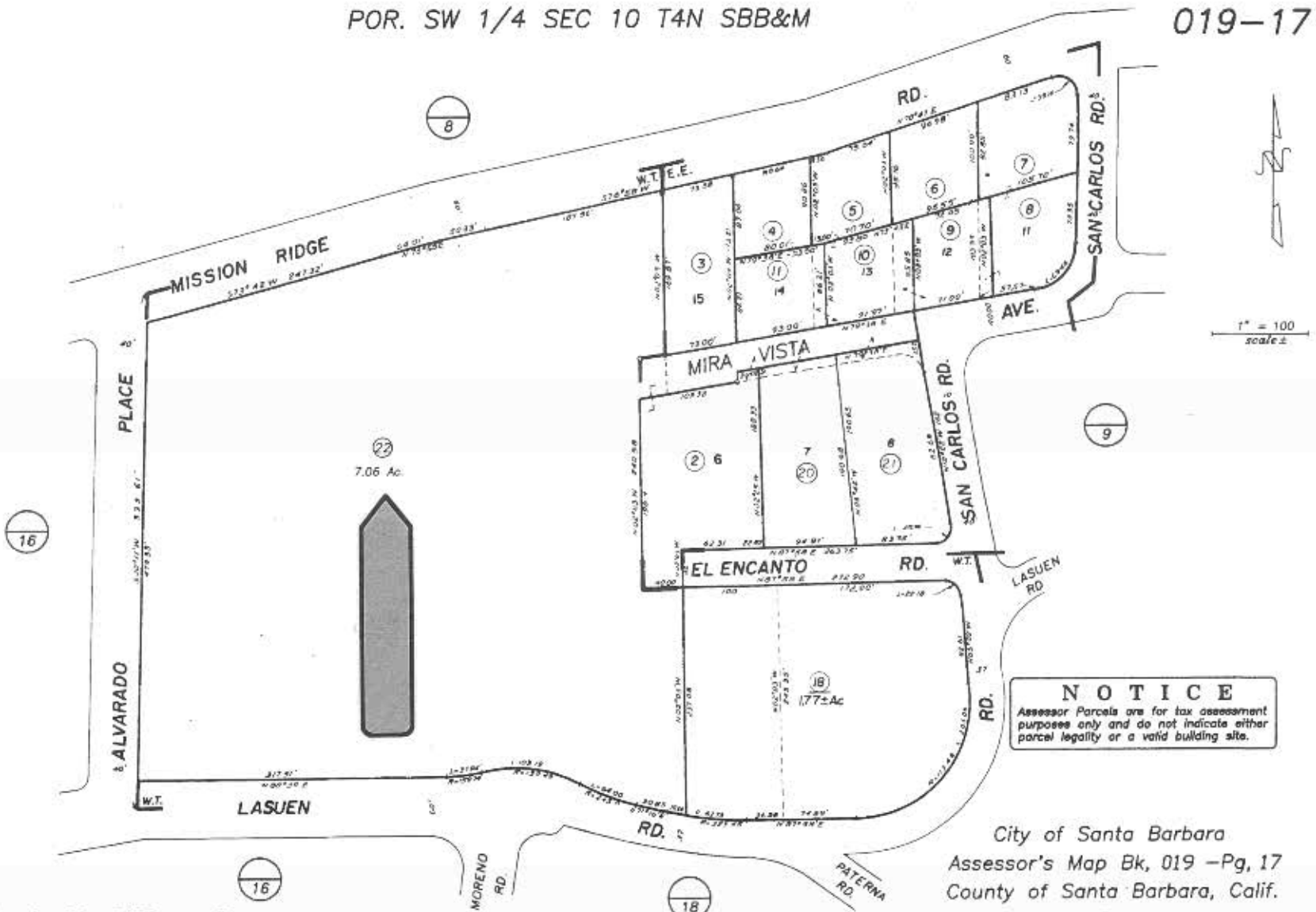


POR. SW 1/4 SEC 10 T4N SBB&M

019-17



**NOTICE**  
 Assessor Parcels are for tax assessment purposes only and do not indicate either parcel legality or a valid building site.

City of Santa Barbara  
 Assessor's Map Bk, 019 -Pg, 17  
 County of Santa Barbara, Calif.

06/98 01,12, & 14 WTD 22

R. M. Bk. 19 , Pg. 92 - El Encanto Tract  
 R. M. Bk. 3 , Pg. 6 - J.M. Warren Tract