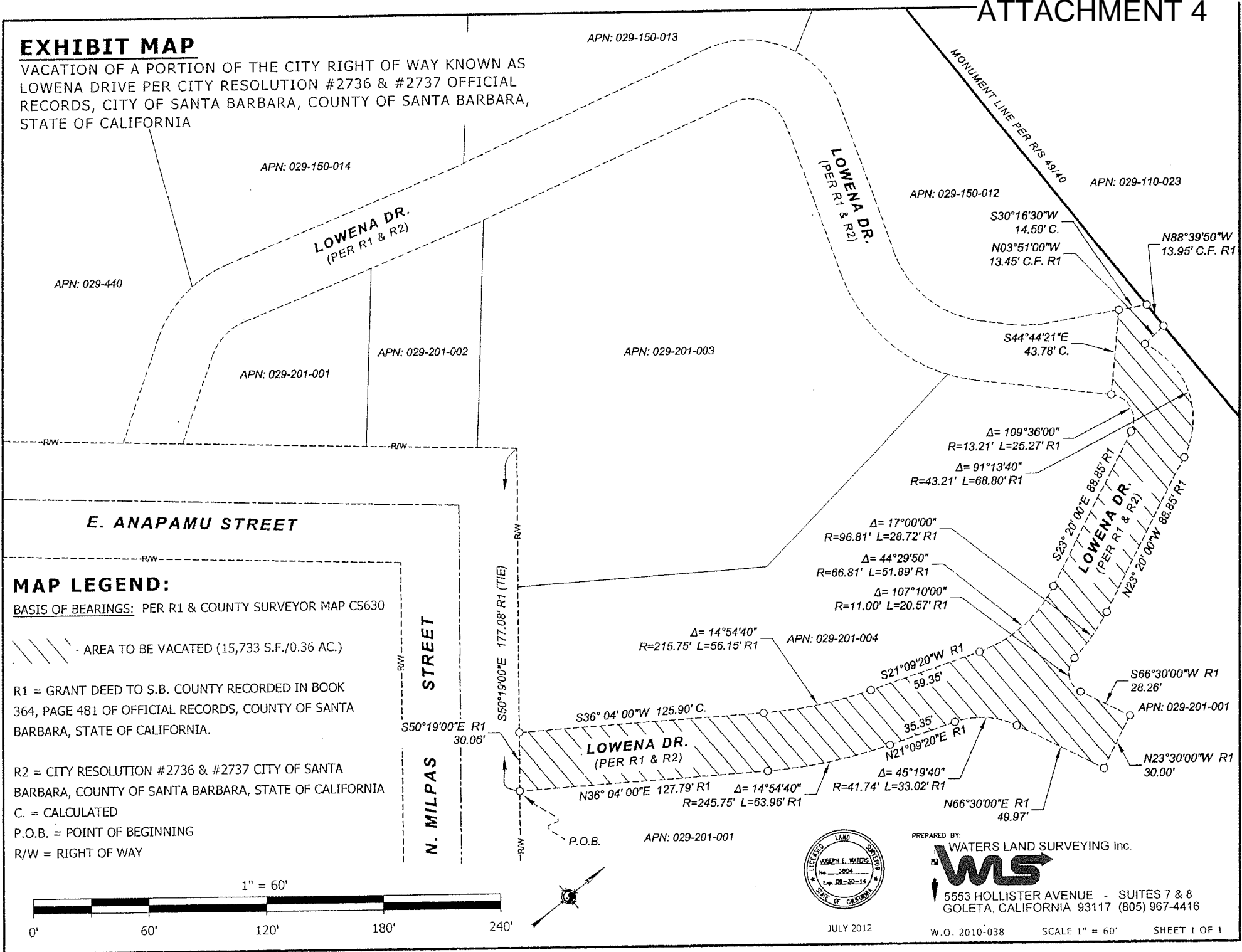


EXHIBIT MAP

VACATION OF A PORTION OF THE CITY RIGHT OF WAY KNOWN AS LOWENA DRIVE PER CITY RESOLUTION #2736 & #2737 OFFICIAL RECORDS, CITY OF SANTA BARBARA, COUNTY OF SANTA BARBARA, STATE OF CALIFORNIA



MAP LEGEND:

BASIS OF BEARINGS: PER R1 & COUNTY SURVEYOR MAP CS630

- AREA TO BE VACATED (15,733 S.F./0.36 AC.)

R1 = GRANT DEED TO S.B. COUNTY RECORDED IN BOOK 364, PAGE 481 OF OFFICIAL RECORDS, COUNTY OF SANTA BARBARA, STATE OF CALIFORNIA.

R2 = CITY RESOLUTION #2736 & #2737 CITY OF SANTA BARBARA, COUNTY OF SANTA BARBARA, STATE OF CALIFORNIA

C. = CALCULATED

P.O.B. = POINT OF BEGINNING

R/W = RIGHT OF WAY



PREPARED BY:
WLS
 WATERS LAND SURVEYING Inc.
 5553 HOLLISTER AVENUE - SUITES 7 & 8
 GOLETA, CALIFORNIA 93117 (805) 967-4416