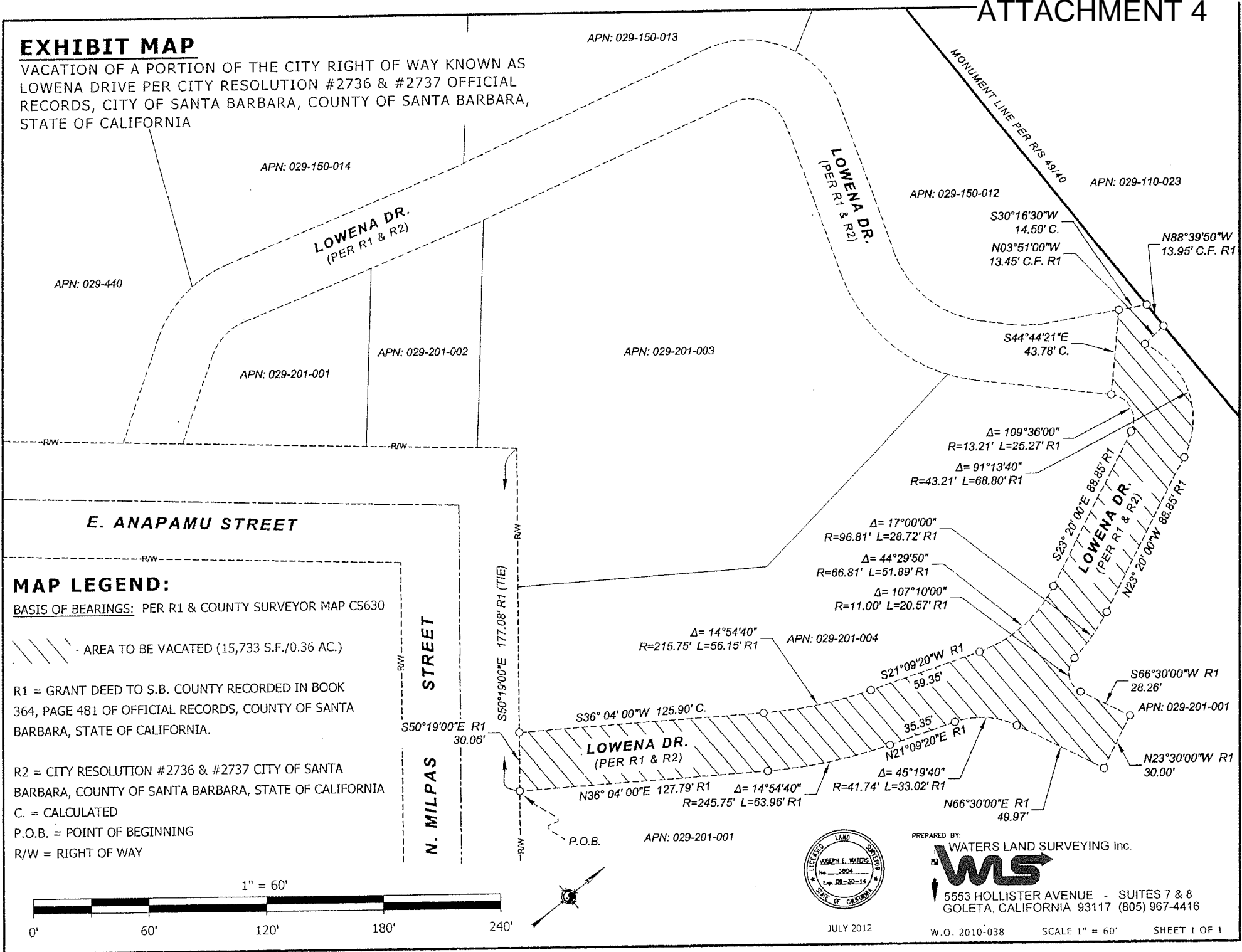


**EXHIBIT MAP**

VACATION OF A PORTION OF THE CITY RIGHT OF WAY KNOWN AS LOWENA DRIVE PER CITY RESOLUTION #2736 & #2737 OFFICIAL RECORDS, CITY OF SANTA BARBARA, COUNTY OF SANTA BARBARA, STATE OF CALIFORNIA



**MAP LEGEND:**

BASIS OF BEARINGS: PER R1 & COUNTY SURVEYOR MAP CS630

- AREA TO BE VACATED (15,733 S.F./0.36 AC.)

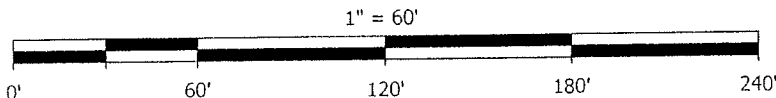
R1 = GRANT DEED TO S.B. COUNTY RECORDED IN BOOK 364, PAGE 481 OF OFFICIAL RECORDS, COUNTY OF SANTA BARBARA, STATE OF CALIFORNIA.

R2 = CITY RESOLUTION #2736 & #2737 CITY OF SANTA BARBARA, COUNTY OF SANTA BARBARA, STATE OF CALIFORNIA

C. = CALCULATED

P.O.B. = POINT OF BEGINNING

R/W = RIGHT OF WAY



JULY 2012

PREPARED BY: WATERS LAND SURVEYING Inc.



5553 HOLLISTER AVENUE - SUITES 7 & 8  
GOLETA, CALIFORNIA 93117 (805) 967-4416

W.O. 2010-038

SCALE 1" = 60'

SHEET 1 OF 1