

EXHIBIT "B"
BATH STREET

RECORD REFERENCE
2012 - 0072029 O.R.

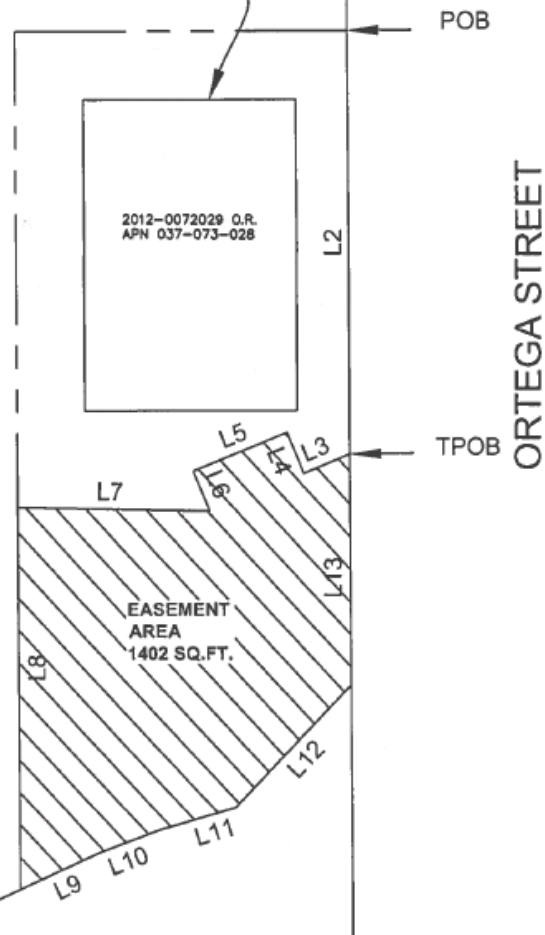


CITY
BLOCK
196

5
5
CM
City Monument
Nail and Tag
Stamped "City Engr"

LINE TABLE		
LINE	LENGTH	DIRECTION
L1	53.09	N42° 24' 18"E
L2	48.32	S42° 24' 18"W
L3	5.67	N69° 54' 22"W
L4	5.00	N20° 05' 38"E
L5	11.52	N69° 54' 22"W
L6	4.85	S20° 05' 38"W
L7	21.87	N46° 24' 00"W
L8	43.62	S42° 24' 22"W
L9	10.02	S72° 17' 46"E
L10	7.37	S68° 10' 11"E
L11	8.92	S64° 17' 52"E
L12	19.28	N85° 55' 12"E
L13	26.22	N42° 24' 18"E

Approximate Footprint
of existing Structure



THIS PLAT IS NOT A LEGAL DESCRIPTION AND
SHOULD BE USED AS AN AID IN UNDERSTANDING
THE ACCOMPANYING LEGAL DESCRIPTION.



CITY OF SANTA BARBARA

PLAT PARCEL EASEMENT BEING A
PORTION OF PARCEL
2012-072029. O.R.
SITUATED IN THE CITY OF SANTA
BARBARA, COUNTY OF SANTA
BARBARA, STATE OF CALIFORNIA

DATE 7/03/13

DRAWN RW

CHECKED CB

SCALE 1" = 20'