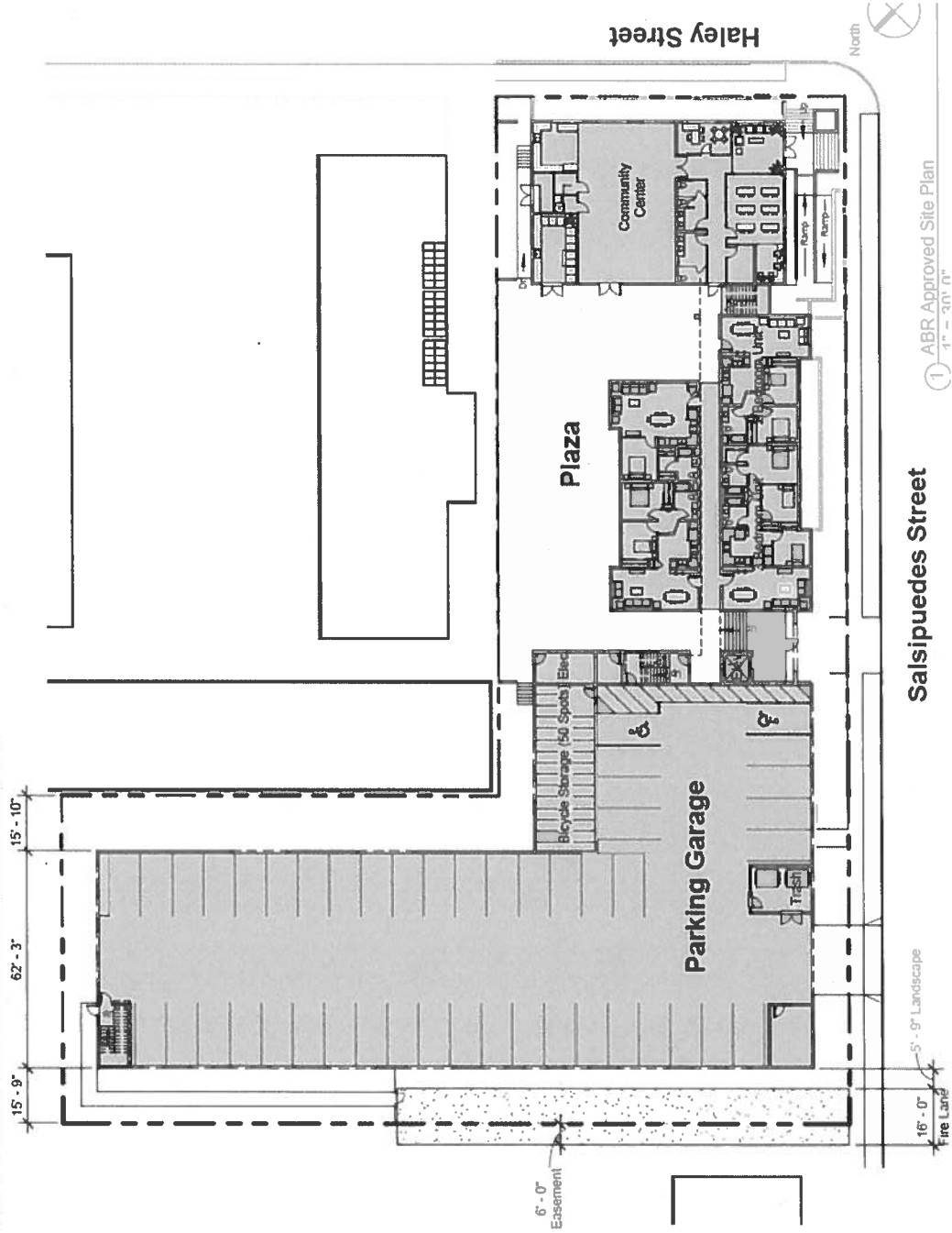


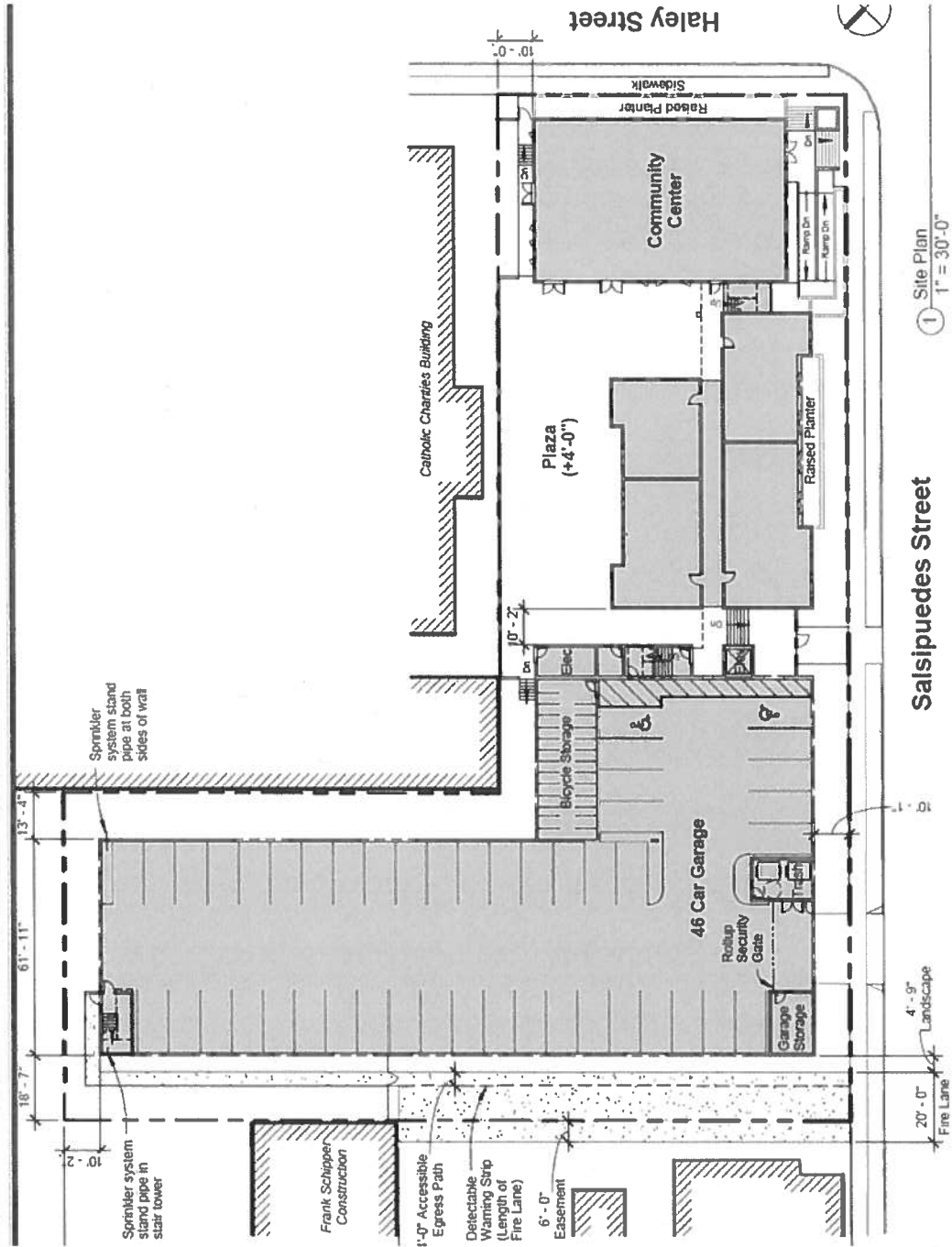
# Approved site plan



① ABR Approved Site Plan  
1" = 30' 0"



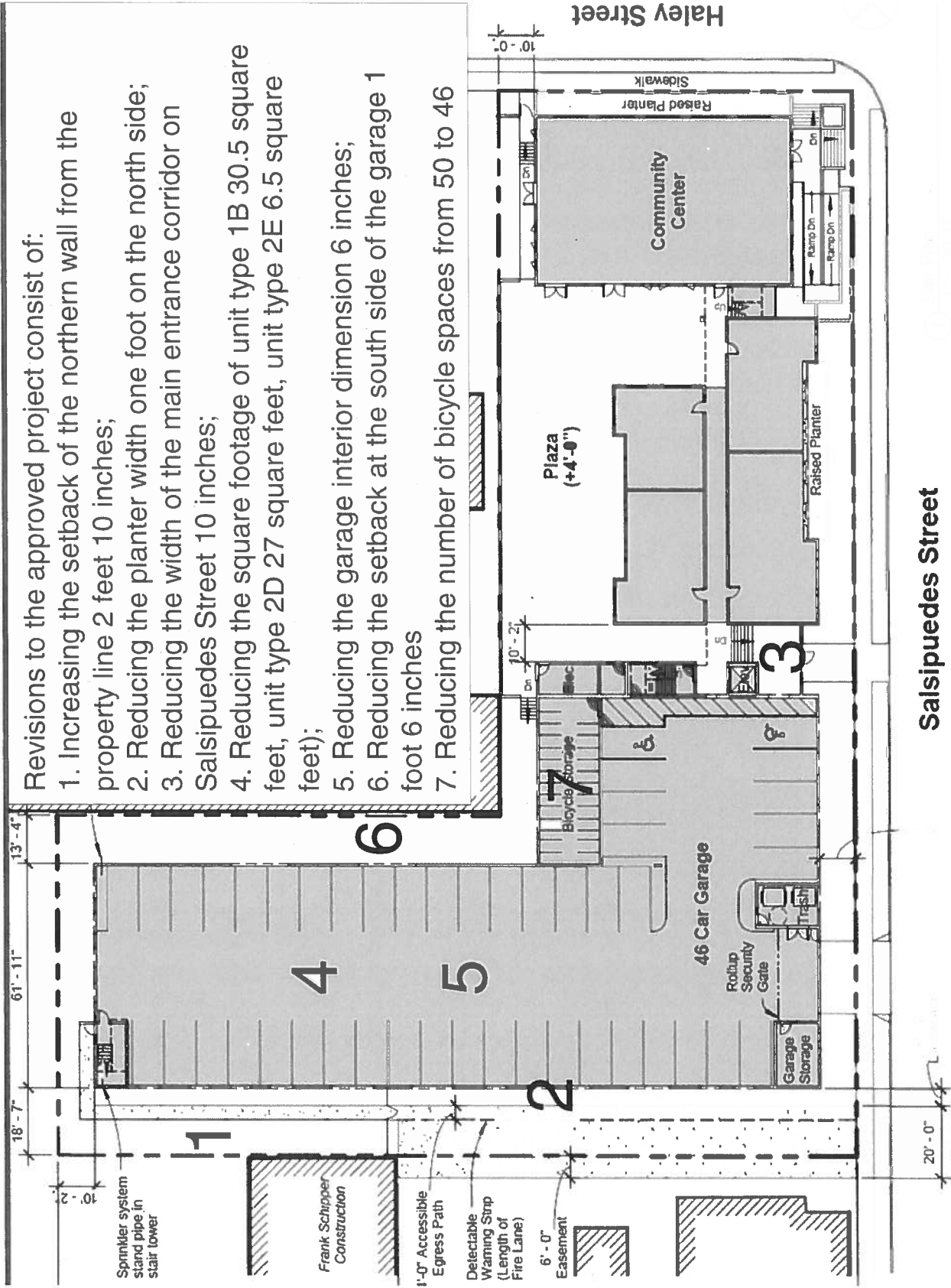
# Revised site plan



① Site Plan  
1" = 30'-0"

Revisions to the approved project consist of:

1. Increasing the setback of the northern wall from the property line 2 feet 10 inches;
2. Reducing the planter width one foot on the north side;
3. Reducing the width of the main entrance corridor on Salsipuedes Street 10 inches;
4. Reducing the square footage of unit type 1B 30.5 square feet, unit type 2D 27 square feet, unit type 2E 6.5 square feet);
5. Reducing the garage interior dimension 6 inches;
6. Reducing the setback at the south side of the garage 1 foot 6 inches
7. Reducing the number of bicycle spaces from 50 to 46



Salsipuedes Street

Haley Street