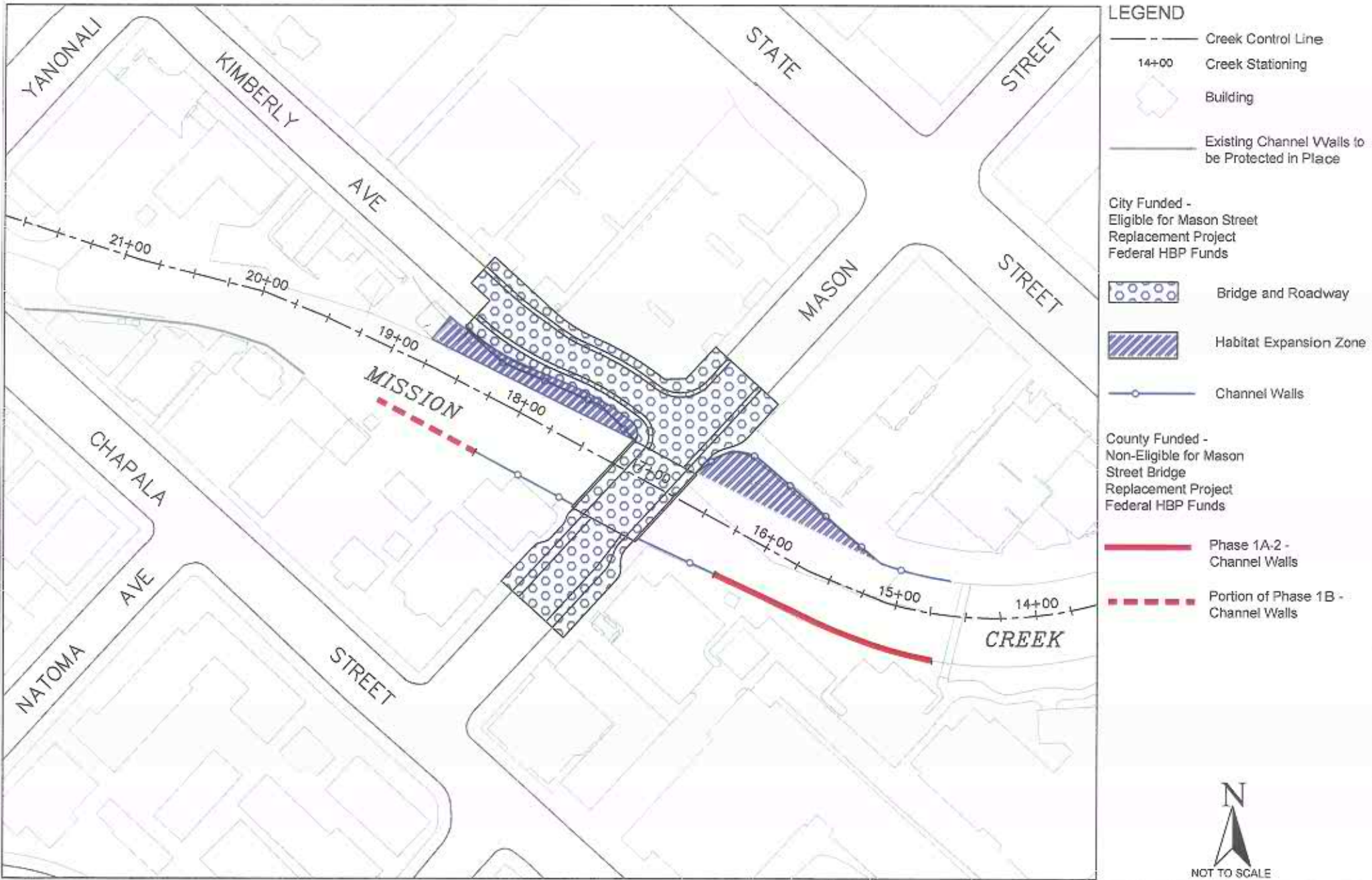


# EXHIBIT 1

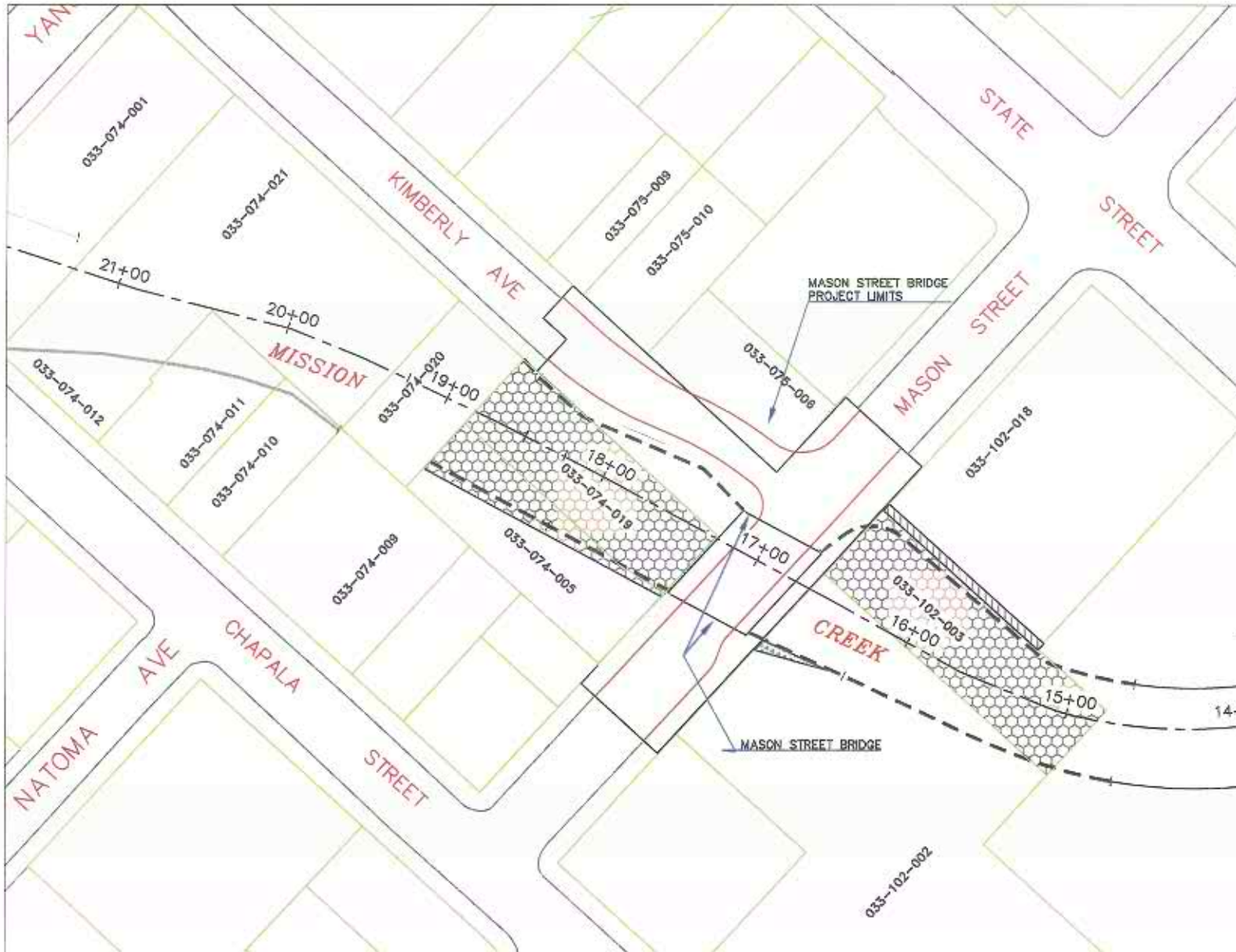
## LIMITS OF CONSTRUCTION AND CONSTRUCTION COST RESPONSIBILITY

### REACH 1A PHASE 2, REACH 1B AND MASON STREET BRIDGE REPLACEMENT PROJECT

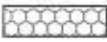


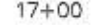


# EXHIBIT 2

## CITY FEE ACQUISITION WITH EASEMENT RIGHTS TO BE ASSIGNED TO FLOOD CONTROL



### LEGEND

-  City Fee Acquisition (in progress, with Easement rights to be assigned to FC)
-  City Easement Acquisition
-  Easement Across 033-102-018 in favor of 033-102-003
-  Proposed Channel Walls
-  Existing Channel Walls to be Protected in Place
-  Creek Control Line
-  Creek Stationing
-  Property Line
-  Assessor Parcel #



NOT TO SCALE