

ORDINANCE NO. _____

AN ORDINANCE OF THE COUNCIL OF THE CITY OF SANTA BARBARA APPROVING AND AUTHORIZING THE CITY ADMINISTRATOR TO EXECUTE THE PURCHASE AND SALE AGREEMENT AND RELATED AGREEMENTS BETWEEN THE CITY OF SANTA BARBARA AND DIRECT RELIEF, A CALIFORNIA NONPROFIT PUBLIC BENEFIT CORPORATION, AT A BASE PRICE OF \$25 PER SQUARE FOOT OF LAND AREA.

THE COUNCIL OF THE CITY OF SANTA BARBARA DOES ORDAIN AS FOLLOWS:

SECTION 1. In accordance with the provisions of Section 520 of the Charter of the City of Santa Barbara, that certain Purchase and Sale Agreement and those certain agreements related thereto, by and between the City of Santa Barbara and Direct Relief, A California Non-profit Public Benefit Corporation, regarding the sale of certain real property located at 6100 Hollister Avenue and legally described in Exhibit "A," attached hereto and incorporated herein by this reference, are hereby approved.

SECTION 2. The City Administrator, or designee, is hereby directed and authorized to execute all such documents as approved by the City Attorney and as necessary to carry out such transaction.

SECTION 3. Upon close of escrow, and upon the effective date of this Ordinance, Fidelity National Title Company, is authorized to record the Grant Deed in the Official Records, in the office of the County Recorder, Santa Barbara County.

POR. RANCHO LOS DOS PUEBLOS

073-08

CURVE TABLE		
NO.	RADIUS	LENGTH
C10	34.01	19.61
C11	25.00	16.92
C12	25.00	9.42
C13	25.00	22.22
C14	25.00	11.56
C15	411.97	25.00
C16	25.00	14.63
C17	25.00	20.89
C18	60	35.15
C19	60	57.19
C20	60	52.27
C21	60	68.00
C22	25.00	10.67
C23	25.00	8.13

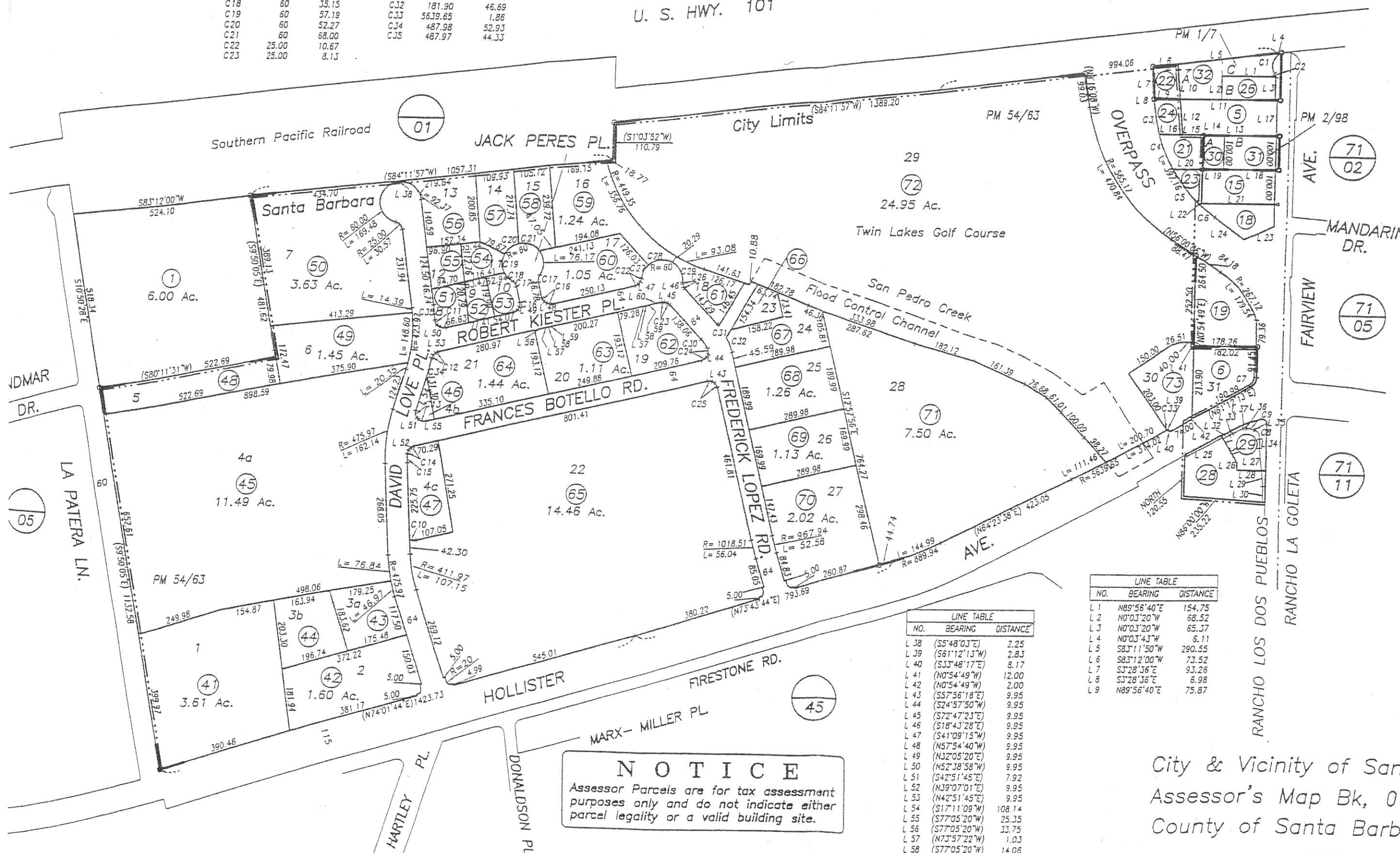
CURVE TABLE		
NO.	RADIUS	LENGTH
C24	25	17.74
C25	25.00	14.61
C26	25.00	5.44
C27	60.00	44.10
C28	60	75.19
C29	60	69.20
C30	117.99	31.93
C31	181.90	7.66
C32	181.90	46.69
C33	5639.65	1.86
C34	487.98	52.93
C35	487.97	44.33

77
23

77
24

77
17

U. S. HWY. 101



NOTE: All bearings in parentheses from PM 54/63 are grid north

1" = 300 scale

CURVE TABLE		
NO.	RADIUS	LENGTH
C1	40.00	59.25
C2	20.00	11.71
C3	454.31	99.64
C4	454.31	108.77
C5	454.31	126.80
C6	454.31	61.95
C7	32	33.67
C8	34.00	30.49
C9	31.25	18.94

LINE TABLE		
NO.	BEARING	DISTANCE
L10	S4°47'30"E	102.08
L11	N89°56'40"E	280.13
L12	S4°47'30"E	103.43
L13	N89°56'40"E	211.01
L14	S0°03'20"E	1.91
L15	N89°56'40"E	60.59
L16	S89°56'40"W	67.24
L17	N0°03'43"W	105.00
L18	N89°56'40"E	149.99
L19	N89°56'40"E	61.03
L20	S89°56'40"W	85.70
L21	N89°56'40"E	211.03
L22	S89°56'40"W	8.41
L23	N65°32'17"E	95.64
L24	S53°30'14"E	107.17
L25	N60°40'11"E	123.10
L26	S0°19'00"W	20.44
L27	N6°31'26"W	66.09
L28	S89°41'00"E	71.56
L29	S6°31'26"E	47.06
L30	S0°28'01"E	45.81
L31	S29°49'00"E	81.74
L32	S56°44'00"W	21.23
L33	S60°11'00"W	10.27
L34	N1°00'47"E	27.84
L35	S88°56'22"W	4.90
L36	N63°53'56"W	4.92
L37	S72°53'56"W	8.80

LINE TABLE		
NO.	BEARING	DISTANCE
L1	N89°56'40"E	154.75
L2	N0°03'20"W	68.52
L3	N0°03'20"W	65.37
L4	N0°03'43"W	6.11
L5	S83°11'50"W	290.55
L6	S83°12'00"W	73.52
L7	S3°28'36"E	93.26
L8	S3°28'36"E	6.98
L9	N89°56'40"E	75.87

LINE TABLE		
NO.	BEARING	DISTANCE
L38	(S5°48'03"E)	2.25
L39	(S61°12'13"W)	2.83
L40	(S33°48'17"E)	8.17
L41	(N0°54'49"W)	12.00
L42	(N0°54'49"W)	2.00
L43	(S5°56'18"E)	9.95
L44	(S24°57'50"W)	9.95
L45	(S72°47'23"E)	9.95
L46	(S18°43'28"E)	9.95
L47	(S41°09'15"W)	9.95
L48	(N5°54'40"W)	9.95
L49	(N32°05'20"E)	9.95
L50	(N52°38'58"W)	9.95
L51	(S42°51'45"E)	7.92
L52	(N39°07'01"E)	9.95
L53	(N42°51'45"E)	9.95
L54	(S17°11'09"W)	108.14
L55	(S77°05'20"W)	25.35
L56	(S77°05'20"W)	33.75
L57	(N73°57'22"W)	1.03
L58	(S77°05'20"W)	14.06
L59	(S48°08'02"W)	1.03
L60	(S77°05'20"W)	36.70

NOTICE
Assessor Parcels are for tax assessment purposes only and do not indicate either parcel legality or a valid building site.

EXHIBIT A

City & Vicinity of Santa Barbara Assessor's Map Bk, 073-Pg, 08 County of Santa Barbara, Calif.

06/00 03.35-36 into 41-73