



**Project Description**

The proposed project includes the construction of an existing eight-story frame structure located at 1818 Castillo Street. The site is currently vacant. The site will be developed with seven multi-unit residential units and three townhomes.

**Project Data**

Address: 1818 Castillo Street  
 Owner: H&M Design  
 Lot Area: 12,862.26 SF or 291 sqm  
 Lot APN: 027-011-023  
 County (Folio): 115-27 (Alameda)  
 Use and Land Designation: Medium-High Density Residential (RH-MHD)  
 Adjoining Owner: 1811 & Duane - (7-20) 7444  
 Height: +/- 25-30'

**Proposed Development**

Multi-Unit Dwelling Units	7
2-Story Units @ 777 SF ±	1,554 SF Total
2-Story Units @ 777 SF ±	1,554 SF Total
2-Story Units @ 1,111 SF ±	8,222 SF Total
3-Story Units @ 1,111 SF ±	4,222 SF Total
<b>Total Units</b>	<b>12 Units</b>
<b>Total Area</b>	<b>14,552 SF Total</b>
2-Story Units @ 819 SF ±	1,782 SF Total
2-Story Units @ 1,111 SF ±	7,778 SF Total
3-Story Units @ 1,111 SF ±	5,052 SF Total
<b>Total Units</b>	<b>12 Units</b>
<b>Total Area</b>	<b>14,612 SF Total</b>

**Parking Calculations**

Units	7	7
Garages	7	7

**Open Space (Common Outdoor Living Spaces Method)**

Category	Area (SF)	Weight	Weighted Area (SF)
Common Outdoor Living Spaces	1,888	1.00	1,888
Other Open Space	77	0.20	15.4
<b>Total Weighted Area</b>			<b>1,903.4</b>

**AUD Ordinance**

Admitted Units	7
Admitted Area (SF)	1,888
Admitted Height (ft)	25

**Vicinity Map**



**Sheet Index**

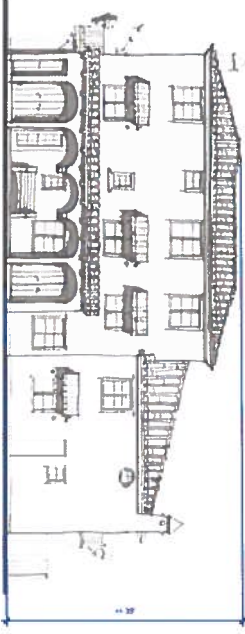
A.1	Cover Sheet
A.2a	Exterior Elevations
A.2b	Exterior Elevations
A.3	Floor Plans
C.1	Common Area
C.2	Civil Plans
C.3	Civil Station
C.4	Civil Details
L.1	Landscaping Plan



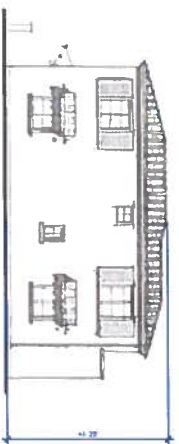
**1818 Castillo St. Apartments**  
 1818 Castillo St.

Cover Sheet

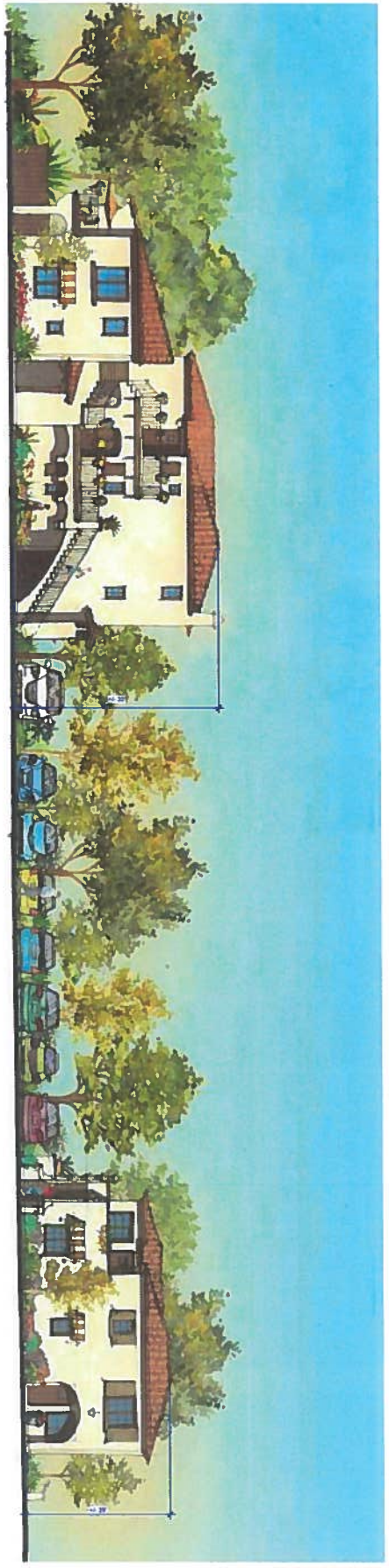




2 South Elevation  
1/8" = 1'-0"



1 South Elevation Front Building  
1/8" = 1'-0"



3 North Elevation  
1/8" = 1'-0"

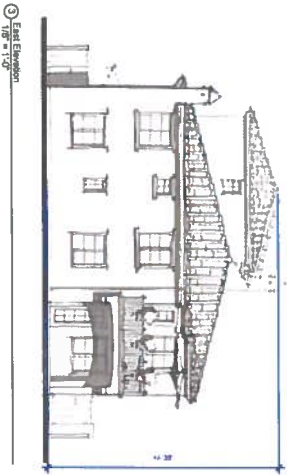


101 E. Rippenwey St., Suite 1  
 761.408.9000 FAX: 761.303.9334  
 www.mmspeightgroup.com

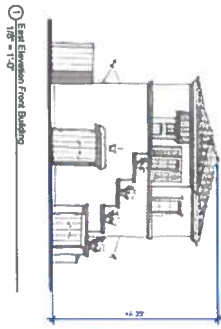
**1818 Castillo St. Apartments**  
 1818 Castillo St.

**Exterior Elevations**

A.2a  
 11/30/2015



3 East Elevation  
1/8" = 1'-0"



1 East Elevation Front Building  
1/8" = 1'-0"



4 West Elevation  
1/8" = 1'-0"



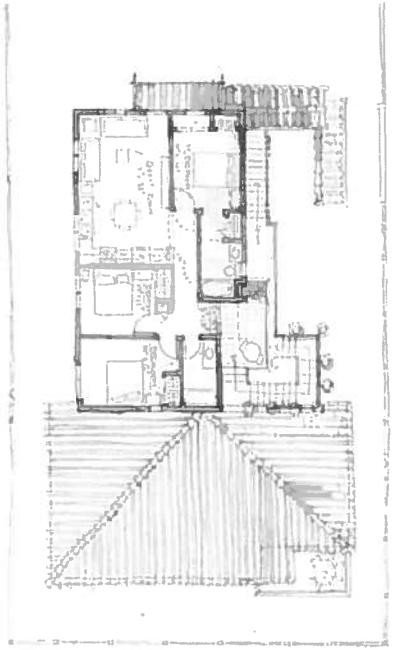
2 StreetView Elevation  
1/8" = 1'-0"



10 E Figueroa St., Suite 1  
Santa Ana, CA 92701  
www.rrmdesign.com

**1818 Castillo St. Apartments**  
1818 Castillo St.

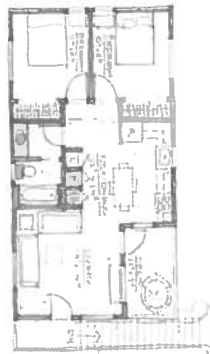
**Exterior Elevations**



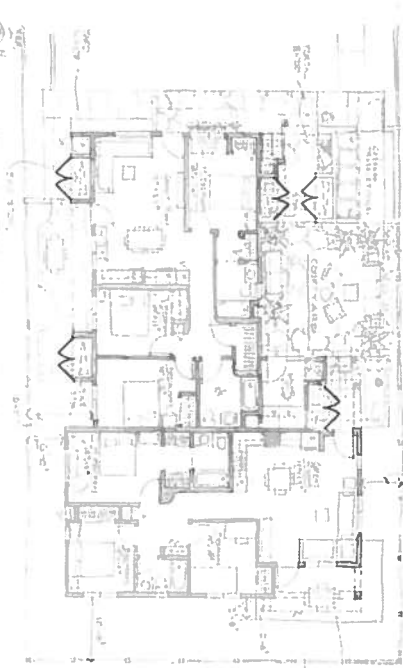
③ Suite Building - Level 3  
TIF = 1.0



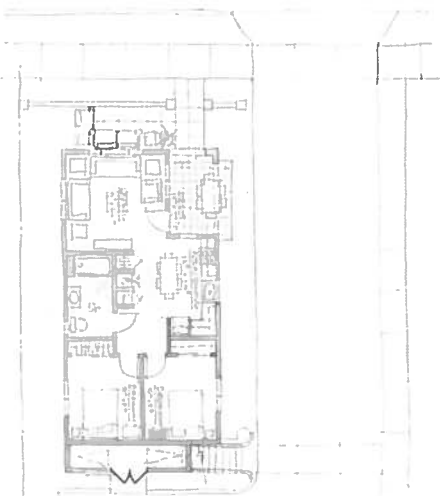
② Suite Building - Level 2  
TIF = 1.0



③ Front Building - Level 2  
TIF = 1.0



① Suite Building - Level 1  
TIF = 1.0



② Front Building - Level 1  
TIF = 1.0



101 E. Figueroa St., Suite 1  
Santa Ana, CA 92701  
Tel: 949.261.1111  
www.rrmdesign.com

# 1818 Castillo St. Apartments

1818 Castillo St.

Floor Plans

A.3

11/30/2015