

LEGAL DESCRIPTION

Real property in the City of Santa Barbara, County of Santa Barbara, State of California, described as follows:

PARCEL A:

PARCEL 1 OF PARCEL MAP NO. 20,587, IN THE CITY OF SANTA BARBARA, COUNTY OF SANTA BARBARA, STATE OF CALIFORNIA, AS SHOWN ON MAP FILED ON 8-9-1996, IN BOOK 51, PAGES 91 THROUGH 96, INCLUSIVE, OF PARCEL MAPS, IN THE OFFICE OF THE COUNTY RECORDER OF SAID COUNTY.

PARCEL B:

AN EASEMENT FOR INGRESS AND EGRESS LYING WITHIN PARCEL TWO OF MAP NO. 20,587 AS SAME IS SHOWN ON MAP NO. 20,587 ABOVE REFERRED TO AS "20' EASEMENT FOR INGRESS AND EGRESS PURPOSES IN FAVOR OF PARCEL ONE PER THIS MAP."

PARCEL C:

AN EASEMENT FOR PUBLIC AND PRIVATE UTILITIES AND PRIVATE DRAINAGE LYING WITHIN PARCEL THREE OF MAP NO. 20,587 AS SAME IS SHOWN ON MAP NO. 20,587 ABOVE REFERRED TO AS "EASEMENT FOR PUBLIC AND PRIVATE UTILITIES AND PRIVATE DRAINAGE IN FAVOR OF PARCEL ONE PER THIS MAP."

PARCEL MAP NO. 20,587

IN THE CITY OF SANTA BARBARA, STATE OF CALIFORNIA

OWNER'S STATEMENT. THE REDEVELOPMENT AGENCY OF THE CITY OF SANTA BARBARA AND AMERICAN TRADITION STATES THAT THEY ARE THE OWNERS OF, OR HAVE AN INTEREST IN, THE LAND INCLUDED WITHIN THE REDEVELOPMENT SHOWN ON THIS MAP...

THE REDEVELOPMENT AGENCY OF THE CITY OF SANTA BARBARA, CALIFORNIA, A PUBLIC BODY CORPORATE AND POLITICAL...

Harriet Miller, Chairperson; David G. Davis, Asst. Secretary. Attest.

American Tradition, A California General Partnership, represented by Fess Elshar Parker, Jr., Trustee.

Trustees of the Parker Family Trust, dated June 5, 1970, General Partner: Fess Elshar Parker III, General Partner.

Ashley Allen Rinehart, General Partner; State of California, County of Santa Barbara, s.s.

Notary Public in and for said state, personally known to me (or proved to me on the basis of satisfactory evidence) to be the person(s) whose name(s) he/she/they executed the same in his/her/their authorized capacity(ies), and that by his/her/their signature(s) on the instrument the person(s), or the entity upon behalf of which the person(s) acted, executed the instrument.

Notary Public in and for said state, personally known to me (or proved to me on the basis of satisfactory evidence) to be the person(s) whose name(s) he/she/they executed the same in his/her/their authorized capacity(ies), and that by his/her/their signature(s) on the instrument the person(s), or the entity upon behalf of which the person(s) acted, executed the instrument.

Notary Public in and for said state, personally known to me (or proved to me on the basis of satisfactory evidence) to be the person(s) whose name(s) he/she/they executed the same in his/her/their authorized capacity(ies), and that by his/her/their signature(s) on the instrument the person(s), or the entity upon behalf of which the person(s) acted, executed the instrument.

Notary Public in and for said state, personally known to me (or proved to me on the basis of satisfactory evidence) to be the person(s) whose name(s) he/she/they executed the same in his/her/their authorized capacity(ies), and that by his/her/their signature(s) on the instrument the person(s), or the entity upon behalf of which the person(s) acted, executed the instrument.

FOR REDEVELOPMENT PURPOSES PURSUANT TO THE CALIFORNIA COMMUNITY REDEVELOPMENT LAW BEING A REDEVELOPMENT OF PORTIONS OF CITY BLOCKS 320, 321, 345, 345 1/2, 345 3/4, 335, 336, AND 335 1/2 AND INTERESTED PARTIES ARE: JACQUA...

JULY, 1996

Penfield & Smith ENGINEERS - SURVEYORS 111 E. VICTORIA ST. SANTA BARBARA, CALIF. 93101

STATE OF CALIFORNIA COUNTY OF SANTA BARBARA } S.S. ON July 31, 1996 BEFORE ME, Joyce L. Carpenter, a Notary Public in and for said county and state, personally appeared...

Notary Public in and for said state, personally known to me (or proved to me on the basis of satisfactory evidence) to be the person(s) whose name(s) he/she/they executed the same in his/her/their authorized capacity(ies), and that by his/her/their signature(s) on the instrument the person(s), or the entity upon behalf of which the person(s) acted, executed the instrument.

RECORDED'S STATEMENT FILED THIS 9th DAY OF August 1996, AT 1:00 A.M. IN BOOK 51 DAY OF August 1996, AT PAGES 91 THROUGH 96.

AT THE REQUEST OF PENFIELD & SMITH ENGINEERS - SURVEYORS. KENNETH A. PETTIT COUNTY CLERK-RECORDER SANTA BARBARA COUNTY, CALIFORNIA

BY: Charles L. Carpenter, Deputy

CLERK OF THE BOARD STATEMENT:

I, KENT M. TAYLOR, CLERK OF THE BOARD OF SUPERVISORS OF SANTA BARBARA COUNTY, CALIFORNIA, HEREBY STATE PURSUANT TO GOVERNMENT CODE SECTION 66464 OF THE SUBDIVISION MAP ACT THAT CERTIFICATES AND DEPOSITS REQUIRED UNDER GOVERNMENT CODE SECTIONS 66492 AND 66493 OF THE PROPERTY...

Kent M. Taylor, Clerk of the Board of Supervisors; Charles L. Carpenter, Deputy. Date August 6, 1996.

SURVEYOR'S STATEMENT.

THIS MAP WAS PREPARED BY ME OR UNDER MY DIRECTION AND IS BASED UPON FIELD SURVEY IN CONFORMANCE WITH THE REQUIREMENTS OF THE SUBDIVISION MAP ACT AND LOCAL ORDINANCE AT THE REQUEST OF THE REDEVELOPMENT AGENCY OF THE CITY OF SANTA BARBARA, CALIFORNIA, IN JULY, 1995. I HEREBY STATE THAT THIS PARCEL MAP SUBSTANTIALLY CONFORMS TO THE APPROVED OR CONDITIONALLY APPROVED TENTATIVE MAP, IF ANY.



KEN KUENCER LS 5617

REDEVELOPMENT AGENCY STATEMENT

I HEREBY STATE THAT THIS MAP WAS DULY ACCEPTED AND APPROVED BY THE BOARD OF DIRECTORS OF THE REDEVELOPMENT AGENCY OF THE CITY OF SANTA BARBARA, CALIFORNIA, ON July 31, 1996, AND THAT THIS MAP AND DIVISION SHOWN THEREON ARE IN COMPLIANCE WITH THE REDEVELOPMENT PLAN FOR THE CENTRAL CITY REDEVELOPMENT PROJECT AREA AS ADOPTED BY CITY ORDINANCE NO. 3566 AND AS AMENDED BY CITY ORDINANCE NUMBERS 3623 AND 3624, AND THAT THE REDEVELOPMENT AGENCY'S EXECUTIVE DIRECTOR WAS DULY AUTHORIZED AND DIRECTED TO ENDOORSE THEREON THE AGENCY'S APPROVAL.

DATED August 6, 1996

Sandra E. LeBaron, Executive Director of the City of Santa Barbara.

NOTE

PURSUANT TO SECTIONS 66469.20 1/2 OF THE GOVERNMENT CODE (SUBDIVISION MAP ACT) THIS MAP REPRESENTS A MERGER AND RESUBMISSION WITHOUT REVERSION AS INDICATED HEREON, WHEREIN ALL EASEMENTS AND RIGHTS-OF-WAY, OTHER THAN PUBLIC UTILITIES, NOT SHOWN HEREON HAVE BEEN ABANDONED.

CITY ENGINEER STATEMENT:

THIS MAP CONFORMS WITH REQUIREMENTS OF SECTION 66428 OF THE SUBDIVISION MAP ACT AND LOCAL ORDINANCES

Pat Kelly, City Engineer, R.C.E. 2707, Exp. March 30, 1997.

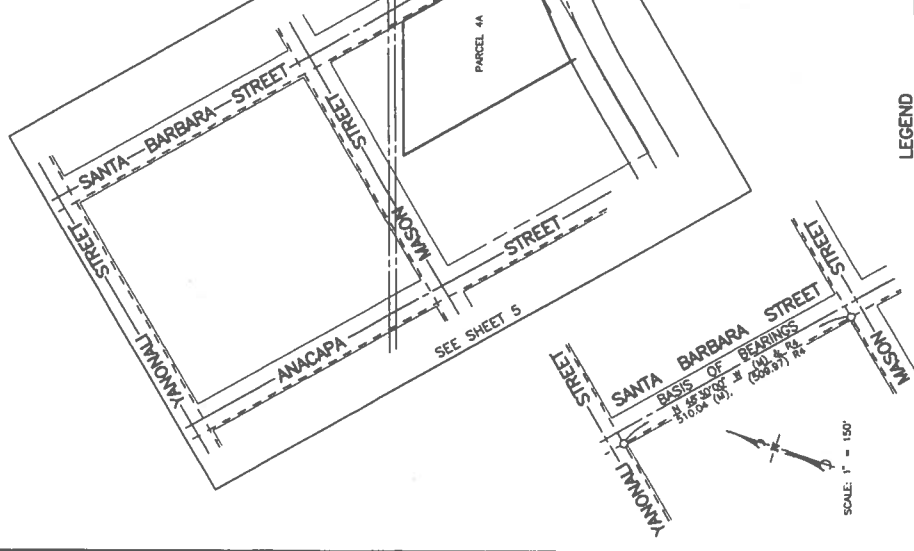
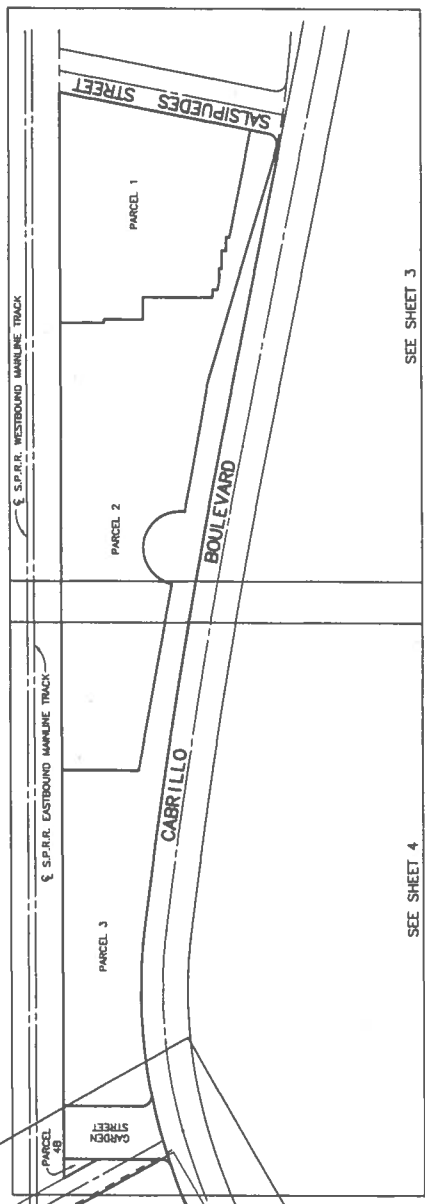
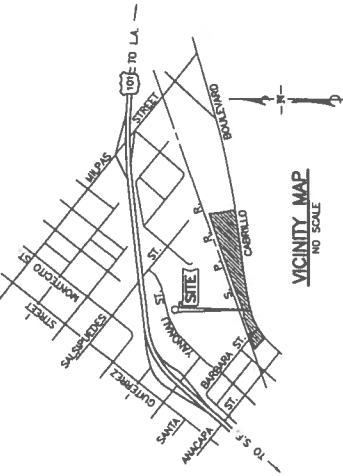


CITY COUNCIL STATEMENT:

I HEREBY STATE THAT THIS MAP WAS DULY ADOPTED AND ACCEPTED BY THE CITY COUNCIL OF THE CITY OF SANTA BARBARA, CALIFORNIA, ON August 6, 1996, AND THAT THE CITY CLERK WAS DULY AUTHORIZED AND DIRECTED TO ENDOORSE THEREON ITS APPROVAL OF THE SAME, AND ITS ACCEPTANCE OF GARDEN STREET AND THAT PORTION OF CABRILLO BOULEVARD AS DEDICATED HEREON

DATED August 6, 1996

Lily Rossi, Chief Deputy City Clerk of the City of Santa Barbara.



PARCEL MAP NO. 20,587

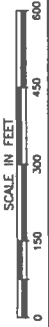
IN THE CITY OF SANTA BARBARA, STATE OF CALIFORNIA
 PURSUANT TO THE CALIFORNIA COMMUNITY REDEVELOPMENT LAW
 FOR REDEVELOPMENT PURPOSES
 BEING A REDEVELOPMENT OF PORTIONS OF CITY BLOCKS 320, 321, 345, 345A, 345B, 335, 336, AND 336A, AND VACATED PORTIONS OF GARDEN STREET, MASON STREET, ANACAPA STREET, YONAH STREET, AND PORTIONS OF CABRILLO AVENUE AND CABRILLO STREET IN CITY OF SANTA BARBARA, AND PORTIONS OF BLOCKS 7, 8, 9, 10, 11, 12, 13, 14, 15, 16, 17, 18, 19, 20, 21, 22, 23, 24, 25, 26, 27, 28, 29, 30, 31, 32, 33, 34, 35, 36, 37, 38, 39, 40, 41, 42, 43, 44, 45, 46, 47, 48, 49, 50, 51, 52, 53, 54, 55, 56, 57, 58, 59, 60, 61, 62, 63, 64, 65, 66, 67, 68, 69, 70, 71, 72, 73, 74, 75, 76, 77, 78, 79, 80, 81, 82, 83, 84, 85, 86, 87, 88, 89, 90, 91, 92, 93, 94, 95, 96, 97, 98, 99, 100, 101, 102, 103, 104, 105, 106, 107, 108, 109, 110, 111, 112, 113, 114, 115, 116, 117, 118, 119, 120, 121, 122, 123, 124, 125, 126, 127, 128, 129, 130, 131, 132, 133, 134, 135, 136, 137, 138, 139, 140, 141, 142, 143, 144, 145, 146, 147, 148, 149, 150, 151, 152, 153, 154, 155, 156, 157, 158, 159, 160, 161, 162, 163, 164, 165, 166, 167, 168, 169, 170, 171, 172, 173, 174, 175, 176, 177, 178, 179, 180, 181, 182, 183, 184, 185, 186, 187, 188, 189, 190, 191, 192, 193, 194, 195, 196, 197, 198, 199, 200, 201, 202, 203, 204, 205, 206, 207, 208, 209, 210, 211, 212, 213, 214, 215, 216, 217, 218, 219, 220, 221, 222, 223, 224, 225, 226, 227, 228, 229, 230, 231, 232, 233, 234, 235, 236, 237, 238, 239, 240, 241, 242, 243, 244, 245, 246, 247, 248, 249, 250, 251, 252, 253, 254, 255, 256, 257, 258, 259, 260, 261, 262, 263, 264, 265, 266, 267, 268, 269, 270, 271, 272, 273, 274, 275, 276, 277, 278, 279, 280, 281, 282, 283, 284, 285, 286, 287, 288, 289, 290, 291, 292, 293, 294, 295, 296, 297, 298, 299, 300, 301, 302, 303, 304, 305, 306, 307, 308, 309, 310, 311, 312, 313, 314, 315, 316, 317, 318, 319, 320, 321, 322, 323, 324, 325, 326, 327, 328, 329, 330, 331, 332, 333, 334, 335, 336, 337, 338, 339, 340, 341, 342, 343, 344, 345, 346, 347, 348, 349, 350, 351, 352, 353, 354, 355, 356, 357, 358, 359, 360, 361, 362, 363, 364, 365, 366, 367, 368, 369, 370, 371, 372, 373, 374, 375, 376, 377, 378, 379, 380, 381, 382, 383, 384, 385, 386, 387, 388, 389, 390, 391, 392, 393, 394, 395, 396, 397, 398, 399, 400, 401, 402, 403, 404, 405, 406, 407, 408, 409, 410, 411, 412, 413, 414, 415, 416, 417, 418, 419, 420, 421, 422, 423, 424, 425, 426, 427, 428, 429, 430, 431, 432, 433, 434, 435, 436, 437, 438, 439, 440, 441, 442, 443, 444, 445, 446, 447, 448, 449, 450, 451, 452, 453, 454, 455, 456, 457, 458, 459, 460, 461, 462, 463, 464, 465, 466, 467, 468, 469, 470, 471, 472, 473, 474, 475, 476, 477, 478, 479, 480, 481, 482, 483, 484, 485, 486, 487, 488, 489, 490, 491, 492, 493, 494, 495, 496, 497, 498, 499, 500, 501, 502, 503, 504, 505, 506, 507, 508, 509, 510, 511, 512, 513, 514, 515, 516, 517, 518, 519, 520, 521, 522, 523, 524, 525, 526, 527, 528, 529, 530, 531, 532, 533, 534, 535, 536, 537, 538, 539, 540, 541, 542, 543, 544, 545, 546, 547, 548, 549, 550, 551, 552, 553, 554, 555, 556, 557, 558, 559, 560, 561, 562, 563, 564, 565, 566, 567, 568, 569, 570, 571, 572, 573, 574, 575, 576, 577, 578, 579, 580, 581, 582, 583, 584, 585, 586, 587, 588, 589, 590, 591, 592, 593, 594, 595, 596, 597, 598, 599, 600, 601, 602, 603, 604, 605, 606, 607, 608, 609, 610, 611, 612, 613, 614, 615, 616, 617, 618, 619, 620, 621, 622, 623, 624, 625, 626, 627, 628, 629, 630, 631, 632, 633, 634, 635, 636, 637, 638, 639, 640, 641, 642, 643, 644, 645, 646, 647, 648, 649, 650, 651, 652, 653, 654, 655, 656, 657, 658, 659, 660, 661, 662, 663, 664, 665, 666, 667, 668, 669, 670, 671, 672, 673, 674, 675, 676, 677, 678, 679, 680, 681, 682, 683, 684, 685, 686, 687, 688, 689, 690, 691, 692, 693, 694, 695, 696, 697, 698, 699, 700, 701, 702, 703, 704, 705, 706, 707, 708, 709, 710, 711, 712, 713, 714, 715, 716, 717, 718, 719, 720, 721, 722, 723, 724, 725, 726, 727, 728, 729, 730, 731, 732, 733, 734, 735, 736, 737, 738, 739, 740, 741, 742, 743, 744, 745, 746, 747, 748, 749, 750, 751, 752, 753, 754, 755, 756, 757, 758, 759, 760, 761, 762, 763, 764, 765, 766, 767, 768, 769, 770, 771, 772, 773, 774, 775, 776, 777, 778, 779, 780, 781, 782, 783, 784, 785, 786, 787, 788, 789, 790, 791, 792, 793, 794, 795, 796, 797, 798, 799, 800, 801, 802, 803, 804, 805, 806, 807, 808, 809, 810, 811, 812, 813, 814, 815, 816, 817, 818, 819, 820, 821, 822, 823, 824, 825, 826, 827, 828, 829, 830, 831, 832, 833, 834, 835, 836, 837, 838, 839, 840, 841, 842, 843, 844, 845, 846, 847, 848, 849, 850, 851, 852, 853, 854, 855, 856, 857, 858, 859, 860, 861, 862, 863, 864, 865, 866, 867, 868, 869, 870, 871, 872, 873, 874, 875, 876, 877, 878, 879, 880, 881, 882, 883, 884, 885, 886, 887, 888, 889, 890, 891, 892, 893, 894, 895, 896, 897, 898, 899, 900, 901, 902, 903, 904, 905, 906, 907, 908, 909, 910, 911, 912, 913, 914, 915, 916, 917, 918, 919, 920, 921, 922, 923, 924, 925, 926, 927, 928, 929, 930, 931, 932, 933, 934, 935, 936, 937, 938, 939, 940, 941, 942, 943, 944, 945, 946, 947, 948, 949, 950, 951, 952, 953, 954, 955, 956, 957, 958, 959, 960, 961, 962, 963, 964, 965, 966, 967, 968, 969, 970, 971, 972, 973, 974, 975, 976, 977, 978, 979, 980, 981, 982, 983, 984, 985, 986, 987, 988, 989, 990, 991, 992, 993, 994, 995, 996, 997, 998, 999, 1000.

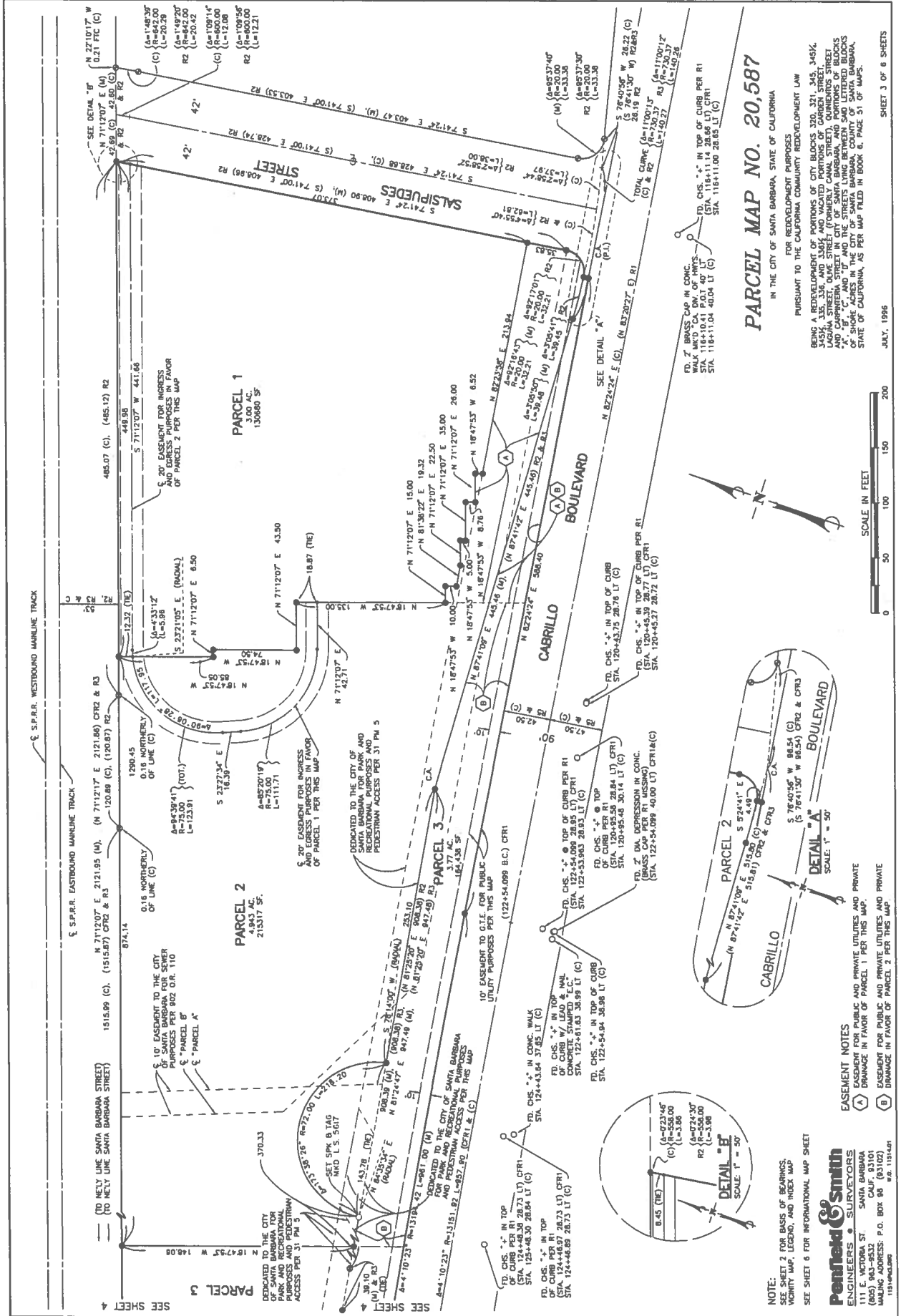
NOTES
 SEE SHEETS 3, 4 & 5 FOR LOTS AND EXTERIOR BOUNDARY DIMENSIONING.
 SEE SHEET 6 FOR INFORMATIONAL MAP SHEET.
 THE DIMENSIONS SHOWN HEREON AS "GRTS" ARE GROUND LEVEL DISTANCES PER R1. THE CALIFORNIA COORDINATE SYSTEM, ZONE 5, DISTANCES AS SHOWN ON R1 HAVE BEEN MULTIPLIED BY 1.00006339.

LEGEND
 ● SET 1/2" PIPE WITH PLASTIC PLUG MARKED "L.S. 5817"
 ○ FOUND 1/2" PIPE WITH TAG MARKED "L.S. 3813" PER R2
 ○ FOUND MONUMENT AS NOTED
 R1 RECORD PER STATE HIGHWAY MAP BOOK 2 PAGES 170 - 185
 R2 RECORD PER BOOK 31 PAGE 4 OF PARCEL MAPS
 R3 RECORD PER BOOK 114 PAGE 22 OF RECORDS OF SURVEYS
 R4 RECORD PER BOOK 118 PAGE 11 OF RECORDS OF SURVEYS
 R5 RECORD PER CITY BLOCK BOOK (PENFIELD & SMITH PRIVATE RECORDS)
 D01 RECORD PER INSTRUMENT NUMBER 92-104384 OFFICIAL RECORDS
 C.A. COMPASS ADJUST
 FTC FROM TRUE CORNER
 L&T LEAD AND TAG MARKED "L.S. 5817"

BASIS OF BEARINGS
 THE BASIS OF BEARINGS FOR THIS SURVEY IS N 48°30'00" W ALONG THE "CITY MONUMENT LINE" OF SANTA BARBARA STREET AS ESTABLISHED BETWEEN FOUND MONUMENTS AT THE INTERSECTION OF SANTA BARBARA STREET WITH THOSE OF YONAHU AND MASON STREETS AS SHOWN HEREON.

Penfield & Smith
 ENGINEERS & SURVEYORS
 111 E. VICTORIA ST.
 SANTA BARBARA, CALIF. 93101
 (805) 963-9932
 MAILING ADDRESS: P.O. BOX 98 (93102)
 115149422.pgm
 8/11/94

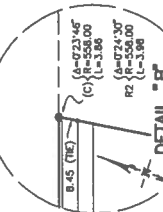
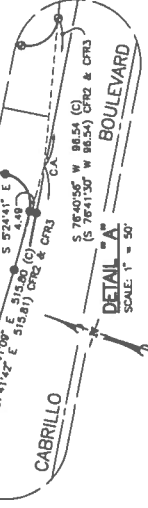
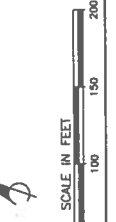




PARCEL MAP NO. 20.587

IN THE CITY OF SANTA BARBARA, STATE OF CALIFORNIA
 FOR REDEVELOPMENT PURPOSES
 PURSUANT TO THE CALIFORNIA COMMUNITY REDEVELOPMENT LAW
 BEING A REDEVELOPMENT OF PORTIONS OF BLOCKS 320, 321, 345, 345A, 345B, 345C, 336, AND 336A, AND VACATED PORTIONS OF GARDEN STREET, CARPENTERS STREET, CARRIAGE STREET, AND PORTIONS OF BLOCKS "A", "B", "C", AND "D", AND THE STREETS LYING BETWEEN SAID LETTERED BLOCKS "A", "B", "C", AND "D", IN THE CITY OF SANTA BARBARA, STATE OF CALIFORNIA, AS PER MAP FILED IN BOOK 6, PAGE 51 OF MAPS.

JULY, 1996
 SHEET 3 OF 6 SHEETS



EASEMENT NOTES
 (A) EASEMENT FOR PUBLIC AND PRIVATE UTILITIES AND PRIVATE DRAINAGE IN FAVOR OF PARCEL 1 PER THIS MAP.
 (B) EASEMENT FOR PUBLIC AND PRIVATE UTILITIES AND PRIVATE DRAINAGE IN FAVOR OF PARCEL 2 PER THIS MAP.

NOTE:
 SHEET 3 FOR BASIS OF RECORDS
 VICINITY MAP, LEGEND, AND INDEX MAP
 SEE SHEET 6 FOR INFORMATIONAL MAP SHEET

Pennfield & Smith
 ENGINEERS & SURVEYORS
 111 E. VICTORIA ST.
 SANTA BARBARA, CALIF. 93101
 (805) 963-9633
 MAILING ADDRESS: P.O. BOX 98
 93102
 11519pcd.com

E. S.P.A.R. WESTBOUND MAINLINE TRACK

E. S.P.A.R. EASTBOUND MAINLINE TRACK

(TO WLY LINE SALSIPUEDES STREET)

(TO WLY LINE SALSIPUEDES STREET)

(TO WLY LINE SALSIPUEDES STREET)

(TO WLY LINE SALSIPUEDES STREET)

(TO WLY LINE SALSIPUEDES STREET)

(TO WLY LINE SALSIPUEDES STREET)

(TO WLY LINE SALSIPUEDES STREET)

(TO WLY LINE SALSIPUEDES STREET)

(TO WLY LINE SALSIPUEDES STREET)

(TO WLY LINE SALSIPUEDES STREET)

(TO WLY LINE SALSIPUEDES STREET)

(TO WLY LINE SALSIPUEDES STREET)

(TO WLY LINE SALSIPUEDES STREET)

(TO WLY LINE SALSIPUEDES STREET)

(TO WLY LINE SALSIPUEDES STREET)

(TO WLY LINE SALSIPUEDES STREET)

(TO WLY LINE SALSIPUEDES STREET)

(TO WLY LINE SALSIPUEDES STREET)

(TO WLY LINE SALSIPUEDES STREET)

(TO WLY LINE SALSIPUEDES STREET)

(TO WLY LINE SALSIPUEDES STREET)

(TO WLY LINE SALSIPUEDES STREET)

(TO WLY LINE SALSIPUEDES STREET)

(TO WLY LINE SALSIPUEDES STREET)

(TO WLY LINE SALSIPUEDES STREET)

(TO WLY LINE SALSIPUEDES STREET)

(TO WLY LINE SALSIPUEDES STREET)

(TO WLY LINE SALSIPUEDES STREET)

(TO WLY LINE SALSIPUEDES STREET)

(TO WLY LINE SALSIPUEDES STREET)

(TO WLY LINE SALSIPUEDES STREET)

(TO WLY LINE SALSIPUEDES STREET)

(TO WLY LINE SALSIPUEDES STREET)

(TO WLY LINE SALSIPUEDES STREET)

(TO WLY LINE SALSIPUEDES STREET)

(TO WLY LINE SALSIPUEDES STREET)

E. S.P.A.R. WESTBOUND MAINLINE TRACK

E. S.P.A.R. EASTBOUND MAINLINE TRACK

(TO WLY LINE SALSIPUEDES STREET)

(TO WLY LINE SALSIPUEDES STREET)

(TO WLY LINE SALSIPUEDES STREET)

(TO WLY LINE SALSIPUEDES STREET)

(TO WLY LINE SALSIPUEDES STREET)

(TO WLY LINE SALSIPUEDES STREET)

(TO WLY LINE SALSIPUEDES STREET)

(TO WLY LINE SALSIPUEDES STREET)

(TO WLY LINE SALSIPUEDES STREET)

(TO WLY LINE SALSIPUEDES STREET)

(TO WLY LINE SALSIPUEDES STREET)

(TO WLY LINE SALSIPUEDES STREET)

(TO WLY LINE SALSIPUEDES STREET)

(TO WLY LINE SALSIPUEDES STREET)

(TO WLY LINE SALSIPUEDES STREET)

(TO WLY LINE SALSIPUEDES STREET)

(TO WLY LINE SALSIPUEDES STREET)

(TO WLY LINE SALSIPUEDES STREET)

(TO WLY LINE SALSIPUEDES STREET)

(TO WLY LINE SALSIPUEDES STREET)

(TO WLY LINE SALSIPUEDES STREET)

(TO WLY LINE SALSIPUEDES STREET)

(TO WLY LINE SALSIPUEDES STREET)

(TO WLY LINE SALSIPUEDES STREET)

(TO WLY LINE SALSIPUEDES STREET)

(TO WLY LINE SALSIPUEDES STREET)

(TO WLY LINE SALSIPUEDES STREET)

(TO WLY LINE SALSIPUEDES STREET)

(TO WLY LINE SALSIPUEDES STREET)

(TO WLY LINE SALSIPUEDES STREET)

(TO WLY LINE SALSIPUEDES STREET)

(TO WLY LINE SALSIPUEDES STREET)

(TO WLY LINE SALSIPUEDES STREET)

(TO WLY LINE SALSIPUEDES STREET)

(TO WLY LINE SALSIPUEDES STREET)

(TO WLY LINE SALSIPUEDES STREET)

E. S.P.A.R. WESTBOUND MAINLINE TRACK

E. S.P.A.R. EASTBOUND MAINLINE TRACK

(TO WLY LINE SALSIPUEDES STREET)

(TO WLY LINE SALSIPUEDES STREET)

(TO WLY LINE SALSIPUEDES STREET)

(TO WLY LINE SALSIPUEDES STREET)

(TO WLY LINE SALSIPUEDES STREET)

(TO WLY LINE SALSIPUEDES STREET)

(TO WLY LINE SALSIPUEDES STREET)

(TO WLY LINE SALSIPUEDES STREET)

(TO WLY LINE SALSIPUEDES STREET)

(TO WLY LINE SALSIPUEDES STREET)

(TO WLY LINE SALSIPUEDES STREET)

(TO WLY LINE SALSIPUEDES STREET)

(TO WLY LINE SALSIPUEDES STREET)

(TO WLY LINE SALSIPUEDES STREET)

(TO WLY LINE SALSIPUEDES STREET)

(TO WLY LINE SALSIPUEDES STREET)

(TO WLY LINE SALSIPUEDES STREET)

(TO WLY LINE SALSIPUEDES STREET)

(TO WLY LINE SALSIPUEDES STREET)

(TO WLY LINE SALSIPUEDES STREET)

(TO WLY LINE SALSIPUEDES STREET)

(TO WLY LINE SALSIPUEDES STREET)

(TO WLY LINE SALSIPUEDES STREET)

(TO WLY LINE SALSIPUEDES STREET)

(TO WLY LINE SALSIPUEDES STREET)

(TO WLY LINE SALSIPUEDES STREET)

(TO WLY LINE SALSIPUEDES STREET)

(TO WLY LINE SALSIPUEDES STREET)

(TO WLY LINE SALSIPUEDES STREET)

(TO WLY LINE SALSIPUEDES STREET)

(TO WLY LINE SALSIPUEDES STREET)

(TO WLY LINE SALSIPUEDES STREET)

(TO WLY LINE SALSIPUEDES STREET)

(TO WLY LINE SALSIPUEDES STREET)

(TO WLY LINE SALSIPUEDES STREET)

(TO WLY LINE SALSIPUEDES STREET)

E. S.P.A.R. WESTBOUND MAINLINE TRACK

E. S.P.A.R. EASTBOUND MAINLINE TRACK

(TO WLY LINE SALSIPUEDES STREET)

(TO WLY LINE SALSIPUEDES STREET)

(TO WLY LINE SALSIPUEDES STREET)

(TO WLY LINE SALSIPUEDES STREET)

(TO WLY LINE SALSIPUEDES STREET)

(TO WLY LINE SALSIPUEDES STREET)

(TO WLY LINE SALSIPUEDES STREET)

(TO WLY LINE SALSIPUEDES STREET)

(TO WLY LINE SALSIPUEDES STREET)

(TO WLY LINE SALSIPUEDES STREET)

(TO WLY LINE SALSIPUEDES STREET)

(TO WLY LINE SALSIPUEDES STREET)

(TO WLY LINE SALSIPUEDES STREET)

(TO WLY LINE SALSIPUEDES STREET)

(TO WLY LINE SALSIPUEDES STREET)

(TO WLY LINE SALSIPUEDES STREET)

(TO WLY LINE SALSIPUEDES STREET)

(TO WLY LINE SALSIPUEDES STREET)

(TO WLY LINE SALSIPUEDES STREET)

(TO WLY LINE SALSIPUEDES STREET)

(TO WLY LINE SALSIPUEDES STREET)

(TO WLY LINE SALSIPUEDES STREET)

(TO WLY LINE SALSIPUEDES STREET)

(TO WLY LINE SALSIPUEDES STREET)

(TO WLY LINE SALSIPUEDES STREET)

(TO WLY LINE SALSIPUEDES STREET)

(TO WLY LINE SALSIPUEDES STREET)

(TO WLY LINE SALSIPUEDES STREET)

(TO WLY LINE SALSIPUEDES STREET)

(TO WLY LINE SALSIPUEDES STREET)

(TO WLY LINE SALSIPUEDES STREET)

(TO WLY LINE SALSIPUEDES STREET)

(TO WLY LINE SALSIPUEDES STREET)

(TO WLY LINE SALSIPUEDES STREET)

(TO WLY LINE SALSIPUEDES STREET)

(TO WLY LINE SALSIPUEDES STREET)

PARCEL MAP NO. 20,587

IN THE CITY OF SANTA BARBARA, STATE OF CALIFORNIA

FOR REDEVELOPMENT PURPOSES

PURSUANT TO THE CALIFORNIA COMMUNITY REDEVELOPMENT LAW

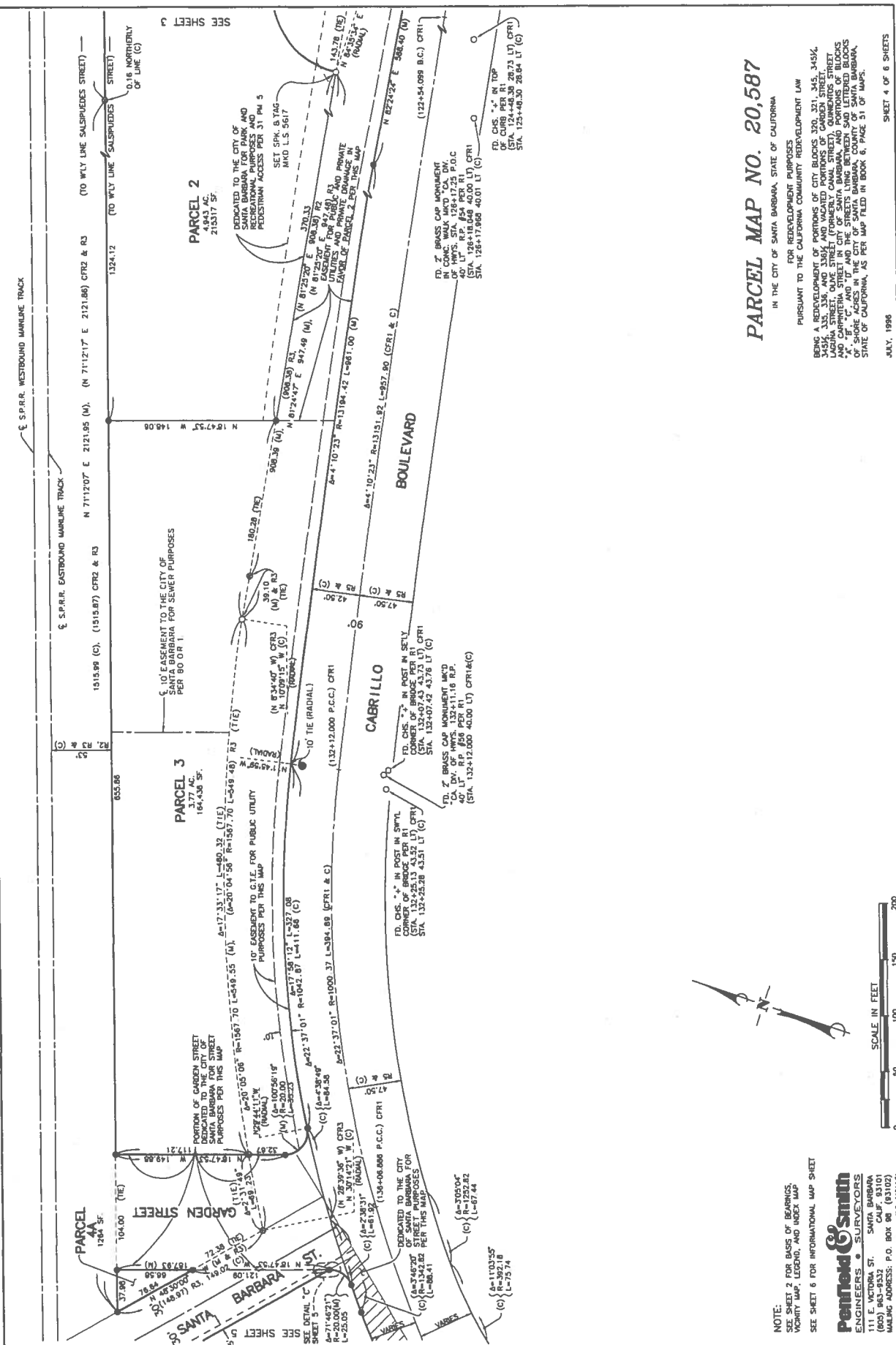
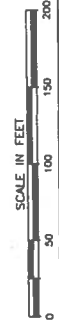
BEING A REDEVELOPMENT OF PORTIONS OF CITY BLOCKS 320, 321, 345, 345 1/2, 345 3/4, 335, 336, AND 336 1/2 AND VACATED PORTIONS OF GARDEN STREET, LAGUNA STREET, OLIVE STREET, SALSIPUEDES STREET, SANTA BARBARA AVENUE, AND PORTIONS OF BLOCKS "A", "B", "C", AND "D" AND THE STREETS LYING BETWEEN SAID LETTERED BLOCKS OF SHORE ACRES IN THE CITY OF SANTA BARBARA COUNTY, STATE OF CALIFORNIA, AS PER MAP FILED IN BOOK 6, PAGE 31 OF MAPS.

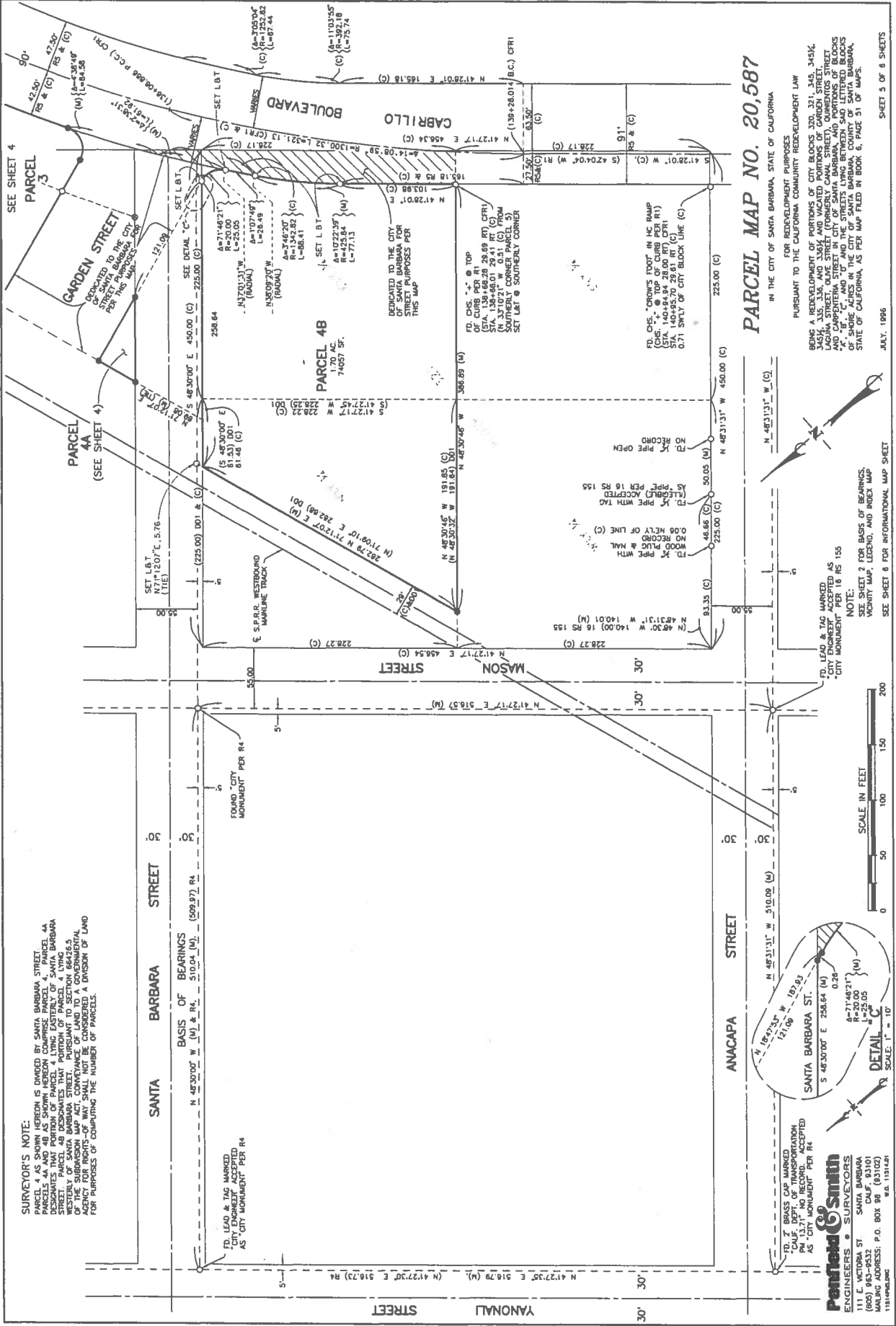
JULY, 1986

SHEET 4 OF 6 SHEETS

NOTE:
SEE SHEET 2 FOR BASIS OF BEARINGS, VERTICAL MAP, LEGEND, AND INDEX MAP
SEE SHEET 6 FOR INFORMATIONAL MAP SHEET

Penfold & Smith
ENGINEERS • SURVEYORS
111 E. VICTORIA ST.
SANTA BARBARA, CALIF. 93101
MAILING ADDRESS: P.O. BOX 617
SANTA BARBARA, CALIF. 93101





SURVEYOR'S NOTE:
 PARCEL 4 AS SHOWN HEREON IS DIVIDED BY SANTA BARBARA STREET
 PARCELS 4A AND 4B AS SHOWN HEREON COMPRISE PARCEL 4, PARCEL 4A
 DESCRIBES THAT PORTION OF PARCEL 4 LYING EASTWARD OF SANTA BARBARA
 WESTERLY OF SANTA BARBARA STREET. PURSUANT TO SECTION 56426.5
 OF THE SUBDIVISION MAP ACT, CONVEYANCE OF LAND TO A GOVERNMENTAL
 ENTITY SHALL BE CONSIDERED TO BE A DIVISION OF LAND
 FOR PURPOSES OF COMPUTING THE NUMBER OF PARCELS.

BASIS OF BEARINGS
 N 48°30'00" W (M) & R4 = 510.04 (M)
 S 09°09'57" R4 = 509.97 R4

FD. LEAD & TAG MARKED
 AS "CITY MONUMENT" PER R4

FOUND "CITY
 MONUMENT" PER R4

FD. 7" BRASS CAP MARKED
 CALIF. DEPT. OF TRANSPORTATION
 AS "CITY MONUMENT" PER R4

Penfield & Smith
 ENGINEERS & SURVEYORS
 1115 VICTORIA ST
 SUITE 100
 MALDEN, CALIF. 95110
 MAILING ADDRESS: P.O. BOX 98 (83102)
 W.A. 1131421

PARCEL MAP NO. 20,587

IN THE CITY OF SANTA BARBARA, STATE OF CALIFORNIA

PURSUANT TO THE CALIFORNIA COMMUNITY REDEVELOPMENT LAW
 FOR REDEVELOPMENT PURPOSES
 BONS A REDEVELOPMENT OF PORTIONS OF CITY BLOCKS 370, 371, 345, 345K,
 345K, 335, 33A, AND 335K AND VACATED PORTIONS OF GARDEN STREET,
 LAGUNA STREET, OLIVE STREET (FORMERLY CANAL STREET), CUMMINGS STREET
 AND PORTIONS OF SANTA BARBARA STREET, SANTA BARBARA STREET
 AND PORTIONS OF MASON STREET AND THE STREETS LYING BETWEEN SAID LETTERED BLOCKS
 OF SHORE ACRES IN THE CITY OF SANTA BARBARA, COUNTY OF SANTA BARBARA,
 STATE OF CALIFORNIA, AS PER MAP FILED IN BOOK 6, PAGE 31 OF MAPS.

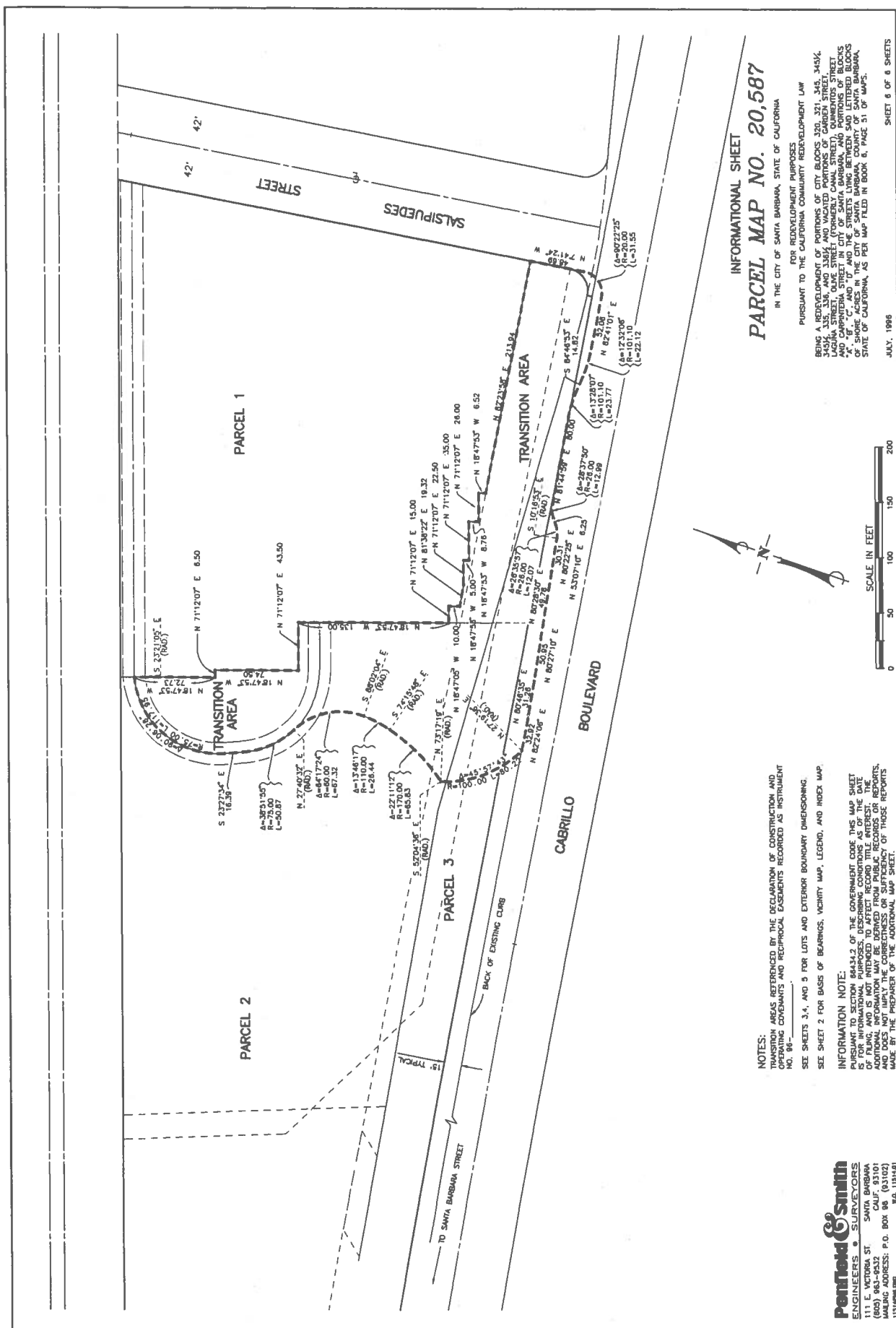
SEE SHEET 2 FOR BASIS OF BEARINGS,
 VANTITY MAP, LEGEND, AND INDEX MAP
 NOTE:
 SEE SHEET 6 FOR INFORMATIONAL MAP SHEET

SCALE 1" = 100'
 0 50 100 150 200
 FEET

DETAIL
 SCALE 1" = 10'

JULY, 1996

SEE SHEET 5 OF 6 SHEETS



INFORMATIONAL SHEET
PARCEL MAP NO. 20,587

IN THE CITY OF SANTA BARBARA, STATE OF CALIFORNIA
 PURSUANT TO THE CALIFORNIA COMMUNITY REDEVELOPMENT LAW
 FOR REDEVELOPMENT PURPOSES
 BEING A REDEVELOPMENT OF PORTIONS OF CITY BLOCKS 320, 321, 343, 343K, 343L, 338, 33A, AND 33B, AND VACATED PORTIONS OF GARDEN STREET, LAGUNA STREET, OLIVE STREET (FORMERLY CALLED SAN JUAN), AND PORTIONS OF BLOCKS 343, 343K, 338, 33A, AND 33B, AND THE STREETS LYING BETWEEN SAID LETTERED BLOCKS OF SHORE ACRES IN THE CITY OF SANTA BARBARA, COUNTY OF SANTA BARBARA, STATE OF CALIFORNIA, AS PER MAP FILED IN BOOK 14, PAGE 31, OF MAPS.

JULY, 1996
 SHEET 6 OF 8 SHEETS

NOTES:
 1. UNDEVELOPED AREAS REFERENCED BY THE DECLARATION OF CONSTRUCTION AND OPERATING AGREEMENTS AND REPROVAL EASEMENTS RECORDED AS INSTRUMENT NO. 94-_____
 2. SEE SHEETS 3, 4, AND 5 FOR LOTS AND EXTERIOR BOUNDARY DIMENSIONING.
 3. SEE SHEET 2 FOR BASIS OF BEARINGS, VICINITY MAP, LEGEND, AND INDEX MAP.
 INFORMATION NOTE:
 4. THIS PARCEL MAP IS PREPARED IN ACCORDANCE WITH SECTION 8434.2 OF THE GOVERNMENT CODE THIS MAP SHEET IS FOR INFORMATIONAL PURPOSES, DESCRIBING CONDITIONS AS OF THE DATE OF FILING, AND IS NOT INTENDED TO AFFECT RECORD TITLE INTERESTS OR RIGHTS, AND DOES NOT IMPLY THE CORRECTNESS OR SUFFICIENCY OF THOSE REPORTS MADE BY THE PREPARER OF THE ADDITIONAL MAP SHEET.

Penfield & Smith
 ENGINEERS & SURVEYORS
 111 E. VICTORIA ST. SANTA BARBARA, CALIFORNIA 93101
 PHONE: (805) 965-1000
 MAILING ADDRESS: P.O. BOX 98 (93102)
 FAX: (805) 965-1001
 W.A. 11814.01

Legal Description

Those portions of Block 334, Block 335, Olive Street (formerly Canal Street), and Carpinteria Street, in the City of Santa Barbara, County of Santa Barbara, State of California, according to the official map thereof, described as a whole as follows:

Beginning at the northwest corner of the parcel, hereinafter to be referred to as Parcel One, described in the Corrected Certificate of Compliance recorded in the office of the County Recorder of said County June 9, 1999, as Instrument No. 99-047105 of Official Records, said corner being at the westerly terminus of that certain course recited as having a bearing and distance of "South 71°12'17" West 174.80 feet" in said document;

Thence, 1st, along the northerly line of said Parcel One, North 71°12'17" East, 450.35 feet to the northeast corner of said Parcel One, said corner being in the southwesterly line of Olive Street, 60.00 feet wide, now abandoned, and being the northwest corner of the parcel described in the Certificate of Compliance recorded in the office of said County Recorder May 27, 1998 as Instrument No. 98-037729 of Official Records;

Thence, 2nd, along the northerly line of said last-mentioned parcel, North 71°12'17" East, 69.11 feet to the northeasterly line of Olive Street and the northwest corner of the parcel described in the Certificate of Compliance recorded in the office of said County Recorder May 27, 1998 as Instrument No. 98-037731 of Official Records;

Thence, 3rd, along the northerly line of said last-mentioned parcel, North 71°12'17" East, 64.79 feet to the northeast corner of said parcel and the northwest corner of the parcel described in the Certificate of Compliance recorded in the office of said County Recorder May 27, 1998 as Instrument No. 98-037733 of Official Records;

Thence, 4th, along the northerly line of said last-mentioned parcel, North 71°12'17" East 65.33 feet to the northernmost corner of said parcel;

Thence, 5th, along the northeasterly line of said parcel, South 48°32'39" East, 7.23 feet to a point in the northwesterly line of the parcel described in the Certificate of Compliance recorded in the office of said County Recorder May 27, 1998 as Instrument No. 98-037735 of Official Records, said last-mentioned parcel to be hereinafter referred to as Parcel Nine, said point also being in the northwesterly line of Carpinteria Street, 60.00 feet wide, now abandoned;

Thence, 6th, along said northwesterly line of said Parcel Nine, North 41°26'16" East, 331.29 feet to the northernmost corner of said Parcel Nine and the beginning of a non tangent curve concave southwesterly, having a radius of 558.00 feet and a radial center which bears South 49°59'47" West;

Thence, 7th, southeasterly, along the northeasterly line of said Parcel Nine and along said curve, through a central angle of 06°17'43", an arc distance of 61.31 feet to the southeast corner of said Parcel Nine and the southeasterly line of said Carpinteria Street;

Thence, 8th, along the northeasterly prolongation of said southeasterly line, and along the northwesterly line of the parcel described in the Certificate of Compliance recorded in the office of said County Recorder May 27, 1998 as Instrument No. 98-037736 of Official Records, North 41°26'16" East, 34.77 feet to northernmost corner of said parcel and the beginning of a non tangent curve concave southwesterly, having a radius of 600.00 feet and a radial center which bears South 53°46'33" West;

Thence, 9th, southeasterly, along the northeasterly line of said parcel and along said curve, through a central angle of 18°37'22", an arc distance of 195.02 feet to the southeast corner of said parcel and the northerly line of the Union Pacific Railroad (formerly Southern Pacific Railroad);

Thence, 10th, along said railroad right of way, and the southerly line of said parcel, South 71°12'17" West, 363.49 feet to the westernmost corner of said parcel and the southerly line of the hereinabove referenced Parcel Nine;

Thence, 11th, along said southerly line and continuing along said railroad right of way, South 71°12'17" West, 120.86 feet to an angle point in the southerly line of the parcel described in the Certificate of Compliance recorded in the office of said County Recorder May 27, 1998 as Instrument No. 98-037730 of Official Records;

Thence, 12th, along said southerly line, and continuing along said right of way, South 71°12'17" West, 39.77 feet to the southeasterly corner of the parcel described in the Certificate of Compliance recorded in the office of said County Recorder June 9, 1999 as Instrument No. 99-047106 of Official Records;

Thence, 13th, along the southerly line of said last-mentioned parcel, South 71°12'17" West, 493.21 feet to the southwest corner of said parcel;

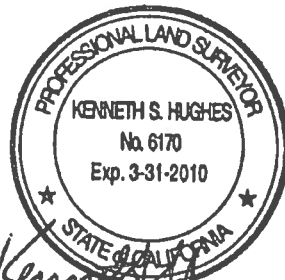
Thence, 14th, along the westerly line of said parcel, North 18°47'43" West, 62.00 feet to the southwest corner of the hereinabove referenced Parcel One;

Thence, 15th, along the westerly line of said Parcel One, North 18°47'43" West, 13.01 feet to the point of beginning.

Containing 2.42 acres, more or less.

Prepared by:

Kenneth S. Hughes
PLS 6170
License expiration
date: 3/31/10



Kenneth S. Hughes
APRIL 24, 2008

LINE	BEARING	DISTANCE
L1	N 71°12'17" E	69.11
L2	N 71°12'17" E	64.79
L3	N 71°12'17" E	65.33
L4	S 48°32'39" E	7.23
L5	N 41°26'16" E	34.77
L6	S 71°12'17" W	120.86
L7	S 71°12'17" W	39.77
L8	N 18°47'43" W	62.00
L9	N 18°47'43" W	13.01

CURVE	DELTA	RADIUS	LENGTH
C1	617'43"	558.00	61.31
C2	1837'22"	600.00	195.02

APN
017-113-022

APN
017-113-023

APN
017-113-016

APN
017-113-019

CALLE CESAR CHAVEZ
(WIDTH VARIABLE)

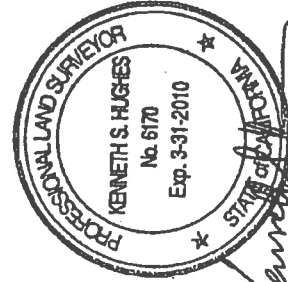
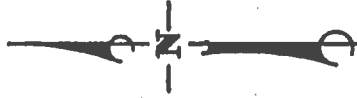


OLIVE ST.
(ABANDONED)

UNION PACIFIC RAILROAD

MERGED PARCEL
AREA=2.42 ACRES
MORE OR LESS

POINT OF BEGINNING
FOR LEGAL
DESCRIPTION



Kenneth S. Hughes
APRIL 24, 2008

EXHIBIT 'B'
VOLUNTARY MERGER
APN 017-113-020

CITY OF SANTA BARBARA
STATE OF CALIFORNIA

SCALE: 1"=120' APRIL 24, 2008



Penfield & Smith
Engineering · Surveying · Planning
· Construction Management ·

111 East Victoria Street, Santa Barbara, CA 93101
Phone: (805) 963-9532 Fax: (805) 966-9801

W.O. 17753.04 17753VOL-MERGER.DWG