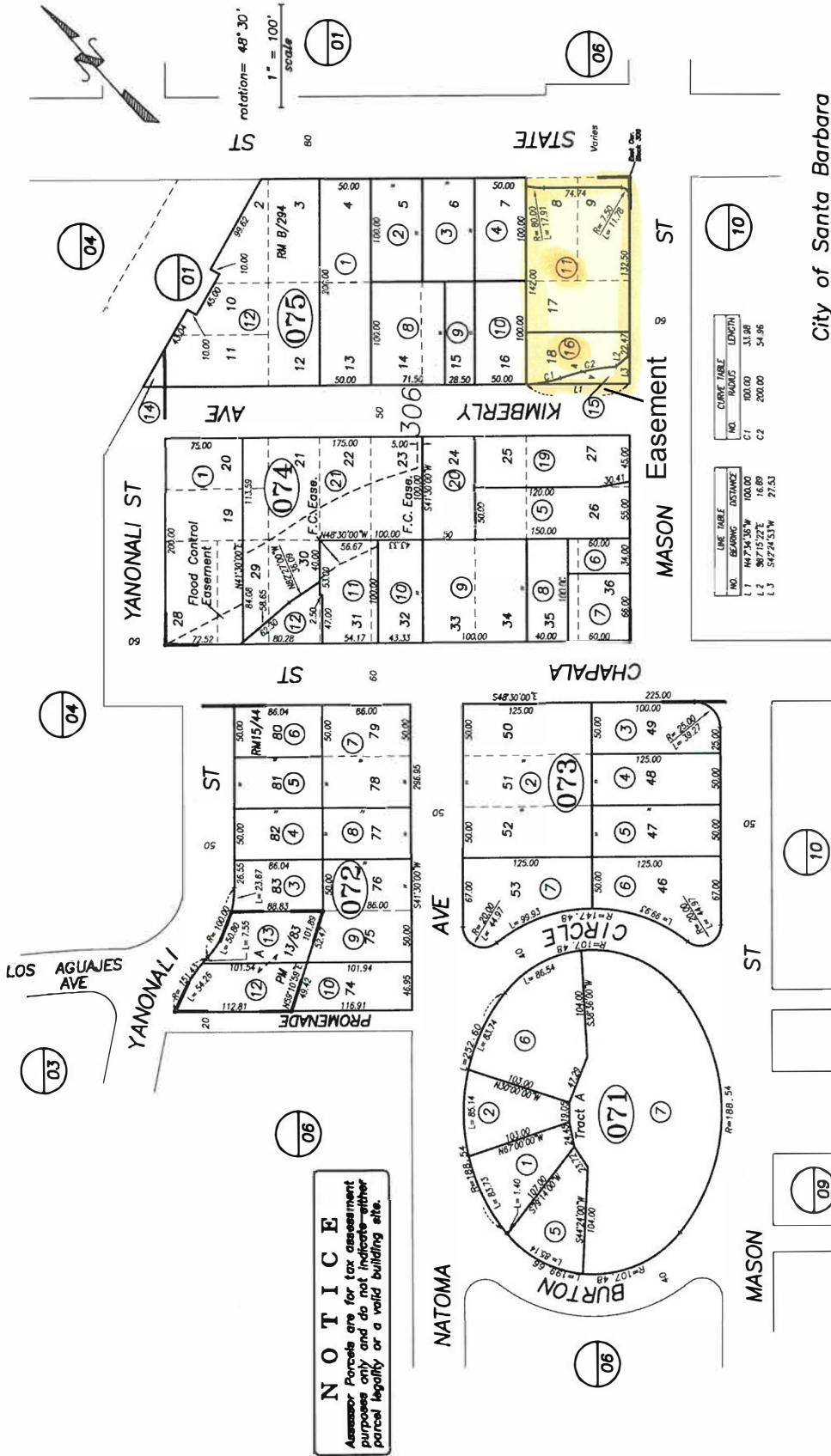


033-07

POR. PUEBLO LANDS



NOTICE
Assessor's Parcels are for tax assessment purposes only and do not indicate whether parcel legality or a valid building site.

LINE TABLE	BEARING	DISTANCE
L 1	N 77° 15' 35" W	103.00
L 2	S 87° 15' 27" E	16.89
L 3	S 47° 24' 53" W	27.53

CURVE TABLE	NO. BEINGS	LENGTH
C 1	100.00	33.08
C 2	200.00	54.98

City of Santa Barbara
Assessor's Map Bk, 033 -Pg. 07
County of Santa Barbara, Calif.

04/08/1924 R.M. Bk. 15 , Pg. 44-45 , Tract "Ambassador Tract"
12/18/1875 R.M. Bk. B , Pg. 294 , Tract Subd. of Block 306

074-11 & 21, Flood control easements
075-06 into 075-15 & 16
LD/14