

SCALE 1" = 6'

826 N. MILPAS STREET  
APN-031-051-024

COURSE TABLE							
COURSE #	LENGTH	BEARING	ARC LENGTH	RADIUS	DELTA	RADIAL BEARING IN	RADIAL BEARING OUT
1	31.51'	N42°24'47"E					
2	0.64'	S47°35'13"E					
3			4.21'	5.00'	48°16'21"	S47°36'59"E	S84°06'40"W
4			4.22'	5.00'	48°22'12"	S84°06'40"W	S47°31'08"E
5	19.04	S42°24'47"W					
6			7.90'	5.00'	90°28'36"	S47°35'18"E	S41°56'06"W
7	9.03	N47°34'40"W					

PROPOSED EASEMENT ≈ 119 SF

EXISTING BUILDINGS

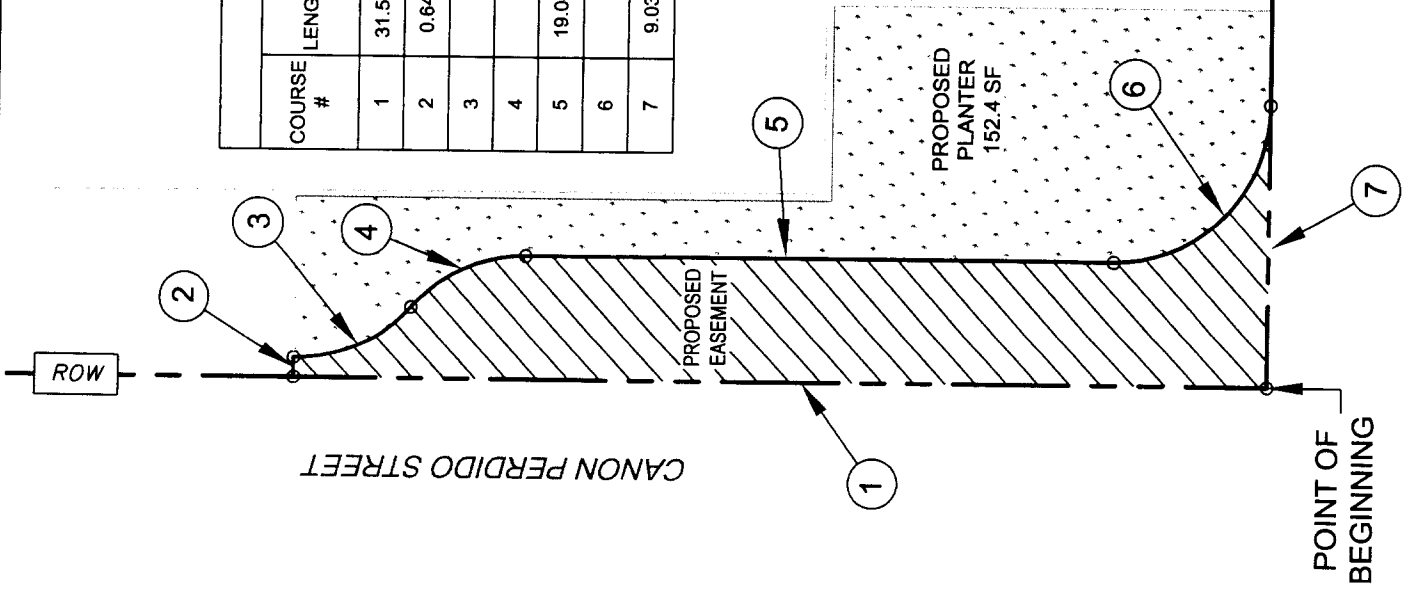
EXISTING ENTRANCE

REPLACE EXISTING SIDEWALK & ENTRANCE  
290 SF

MILPAS STREET

ROW

PROPOSED EASEMENT  
FOR CITY OF SANTA BARBARA  
MILPAS BEAUTIFICATION PROJECT.



ROW

CANON PERDIDO STREET

POINT OF BEGINNING