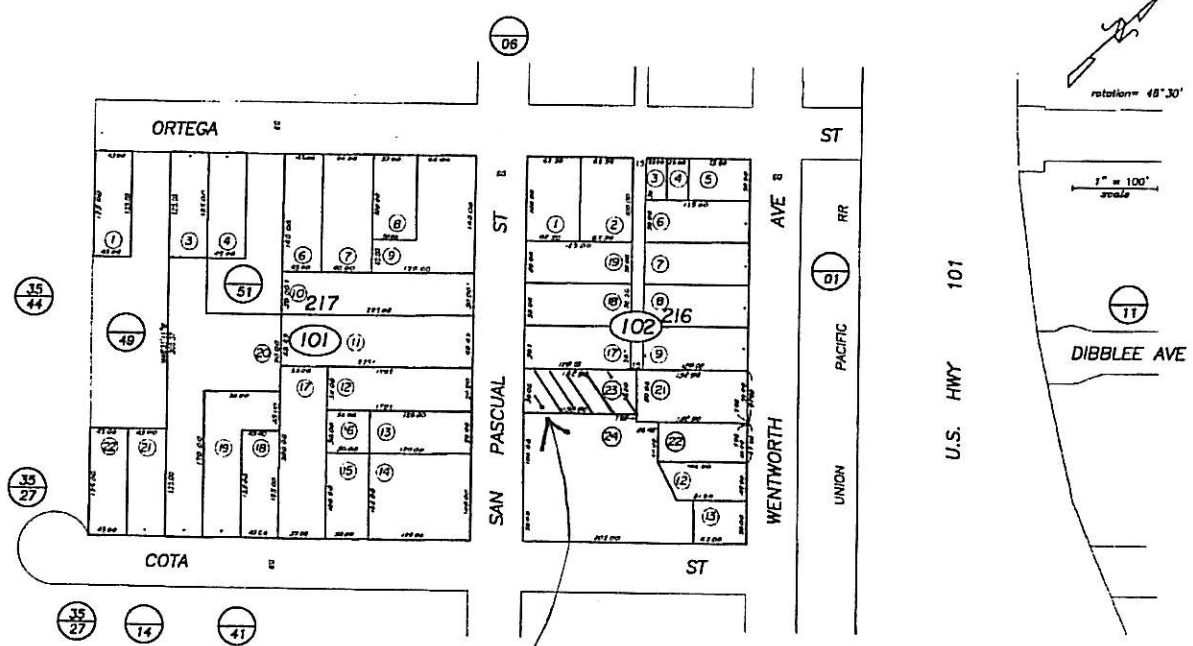


POR. PUEBLO LANDS

037-10



NOTICE
 Assessor Parcels are for tax assessment purposes only and do not indicate either parcel legality or a valid building site.

City of Santa Barbara
 Assessor's Map Bk, 037 -Pg, 10
 County of Santa Barbara, Calif.

05/06 101-05 Issue Date pg 17

618 San Pascual