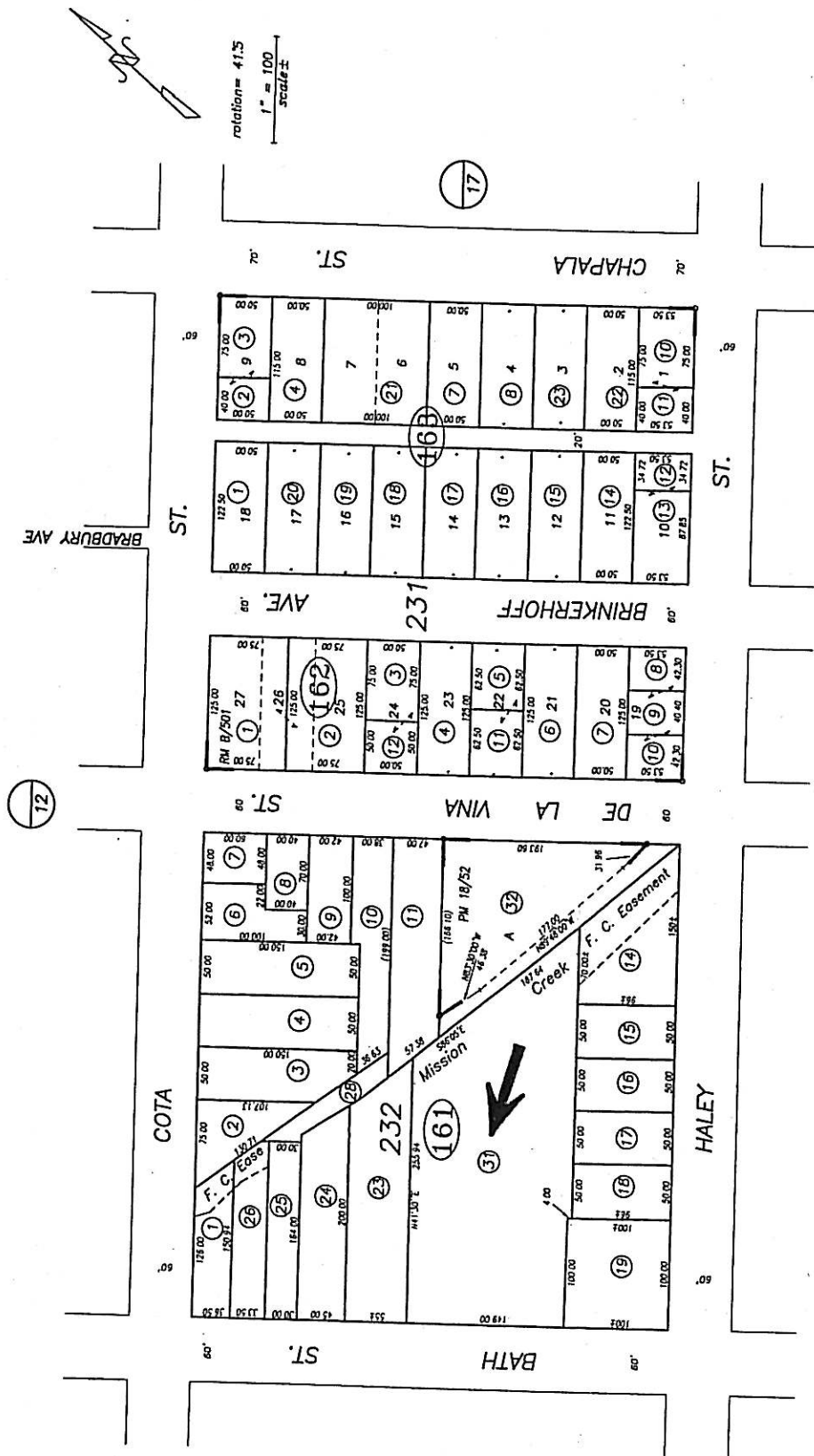


037-16

POR. PUEBLO LANDS



ratio = 41.5
1" = 100'
Scale ±

Lawyers Title Company
This map is to be used only for informational purposes and shall not be construed, in any manner, as a guarantee of the accuracy or sufficiency of the information shown hereon.

NOTICE
Assessor's Parcels are for tax assessment purposes only and do not indicate either parcel legality or a valid building site.

City of Santa Barbara
Assessor's Map Bk, 037 -Pg. 16
County of Santa Barbara, Calif.

R.M. Bk. B , Pg. 501 , Tract Subdivision of block 231

103-09 and 103-22 & 23
ASSIGNED PCL # 101-20

05/97

12

20

15

17