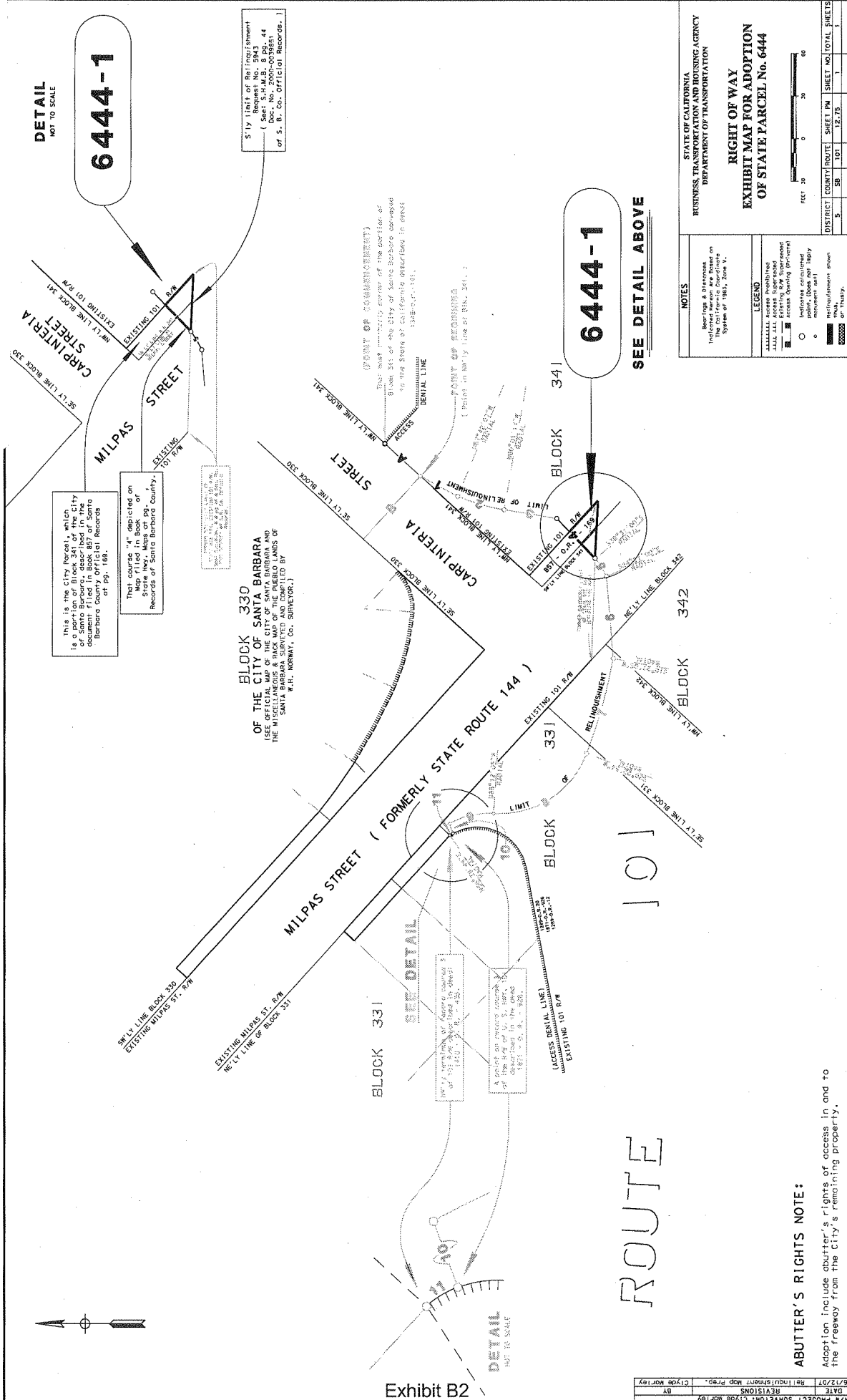


# Attachment 5



DETAIL  
NOT TO SCALE

6444-1

This is the City Parcel, which is described in the City of Santa Barbara, described in the document filed in Book 857 of Santa Barbara County Official Records at pp. 158.

This course "A" depicted on Map filed in Book of State Hwy. Maps of Santa Barbara County, Records of Santa Barbara County.

**BLOCK 330**  
OF THE  
CITY OF SANTA BARBARA  
(SEE OFFICIAL MAP OF THE CITY OF SANTA BARBARA AND THE MISCELLANEOUS & PACE MAP OF THE PUBLIC LANDS OF SANTA BARBARA SERVED AND COMPILED BY E.P. ROBBY, CO. SURVEYOR.)

City Map of the Right of Way  
(Sant. S.H.M.S. 8 PG. 44  
Doc. No. 2000-009861  
of S. B. Co. OFFICIAL RECORDS.)

**COPY OF COMMENTARY**  
This map is a copy of the portion of Block 330 of the City of Santa Barbara conveyed to the State of California described in deed 1348-14-181.

**POINT OF BEGINNING**  
Point of entry line of R/W, 344.

**SEE DETAIL**  
A course on section corner of the City of Santa Barbara, described in the document filed in Book 857 of Santa Barbara County Official Records at pp. 158.

**ACCESS DETAIL LINE**  
Access to the City of Santa Barbara, described in the document filed in Book 857 of Santa Barbara County Official Records at pp. 158.

DETAIL  
NOT TO SCALE

6444-1

SEE DETAIL ABOVE

ROUTE 101

STATE OF CALIFORNIA  
BUSINESS, TRANSPORTATION AND HOUSING AGENCY  
DEPARTMENT OF TRANSPORTATION

**RIGHT OF WAY  
EXHIBIT MAP FOR ADOPTION  
OF STATE PARCEL No. 6444**

NOTES  
Bearings & Distances  
Indicated herein are based on  
the North American Datum of 1983,  
System of 1983, Zone V.

LEGEND  
ALLIABLE notes prohibited  
--- Easement  
--- Access Easement (Perpetual)  
--- Access Easement (Temporary)  
○ Indifference concerned  
○ Indifference not concerned  
--- Relinquishment shown

FEET 0 20 40 60

DISTRICT	COUNTY	ROUTE	SHEET	PM	TOTAL SHEETS
5	SB	101	12.75	1	1

**ABUTTER'S RIGHTS NOTE:**

Adoption include abutter's rights of access in and to the freeway from the City's remaining property.