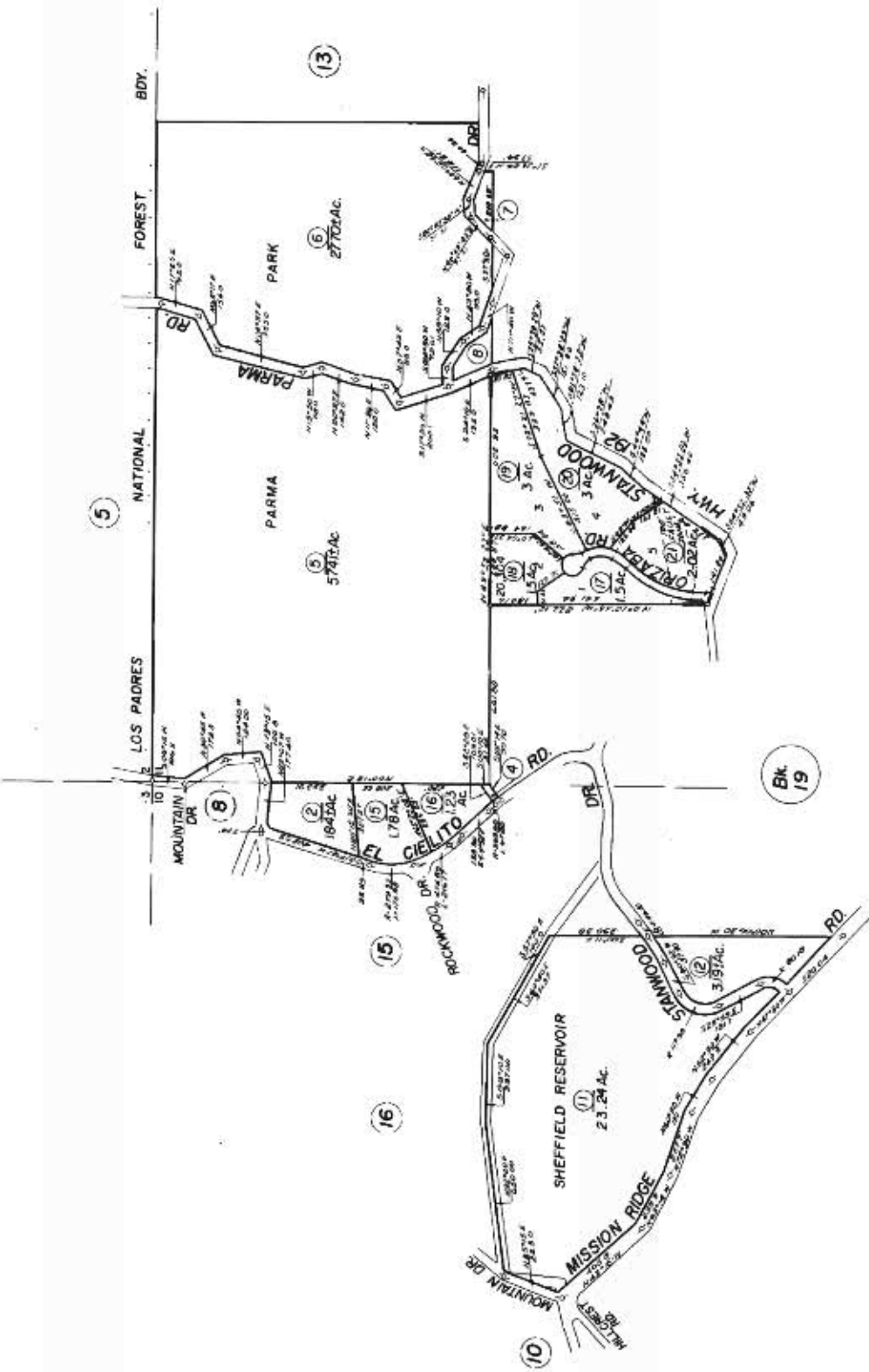


POR. SEC. 10 & 11, T. 4N., R. 27W., S.B.B.&M.

21-12



Assessor's Map Bk. 21 - Pg. 12

County of Santa Barbara, Calif.

NOTE - Assessor's Block Numbers Shown in Ellipses
Assessor's Parcel Numbers Shown in Circle

6/17/81 R.M. Bk. 121, Pgs. 37-40 - Tract No. 20,304