






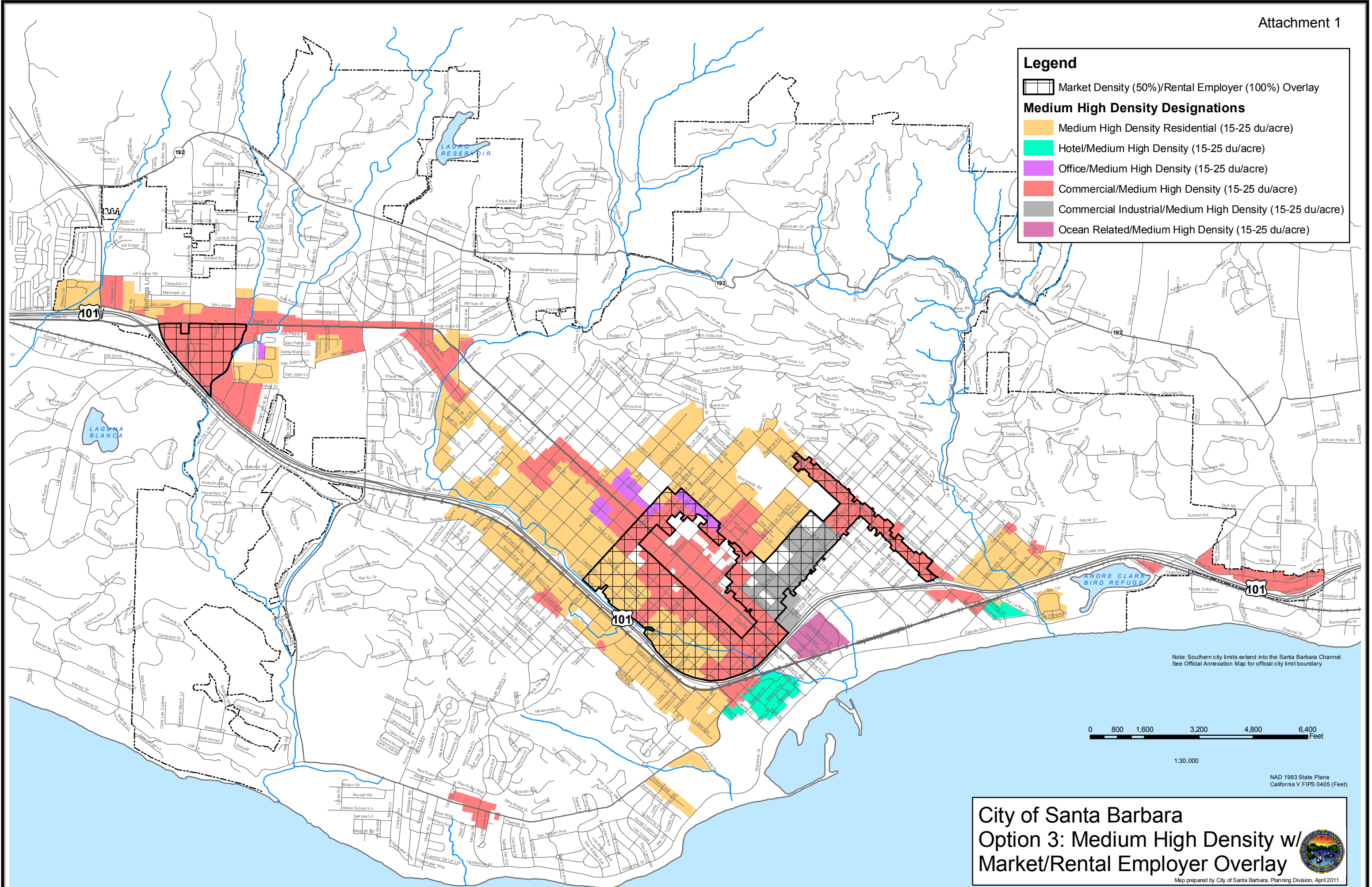


Legend

-  Market Density (50%)/Rental Employer (100%) Overlay
- Medium High Density Designations**
-  Medium High Density Residential (15-25 du/acre)
-  Hotel/Medium High Density (15-25 du/acre)
-  Office/Medium High Density (15-25 du/acre)
-  Commercial/Medium High Density (15-25 du/acre)
-  Commercial Industrial/Medium High Density (15-25 du/acre)
-  Ocean Related/Medium High Density (15-25 du/acre)




Note: Southern city limits extend into the Santa Barbara Channel.
See Official Annexation Map for official city limit boundary.



1:30,000

NAD 1983 State Plane
California V FIPS 0405 (Feet)

City of Santa Barbara
Option 3: Medium High Density w/
Market/Rental Employer Overlay



Map prepared by City of Santa Barbara, Planning Division, April 2011