

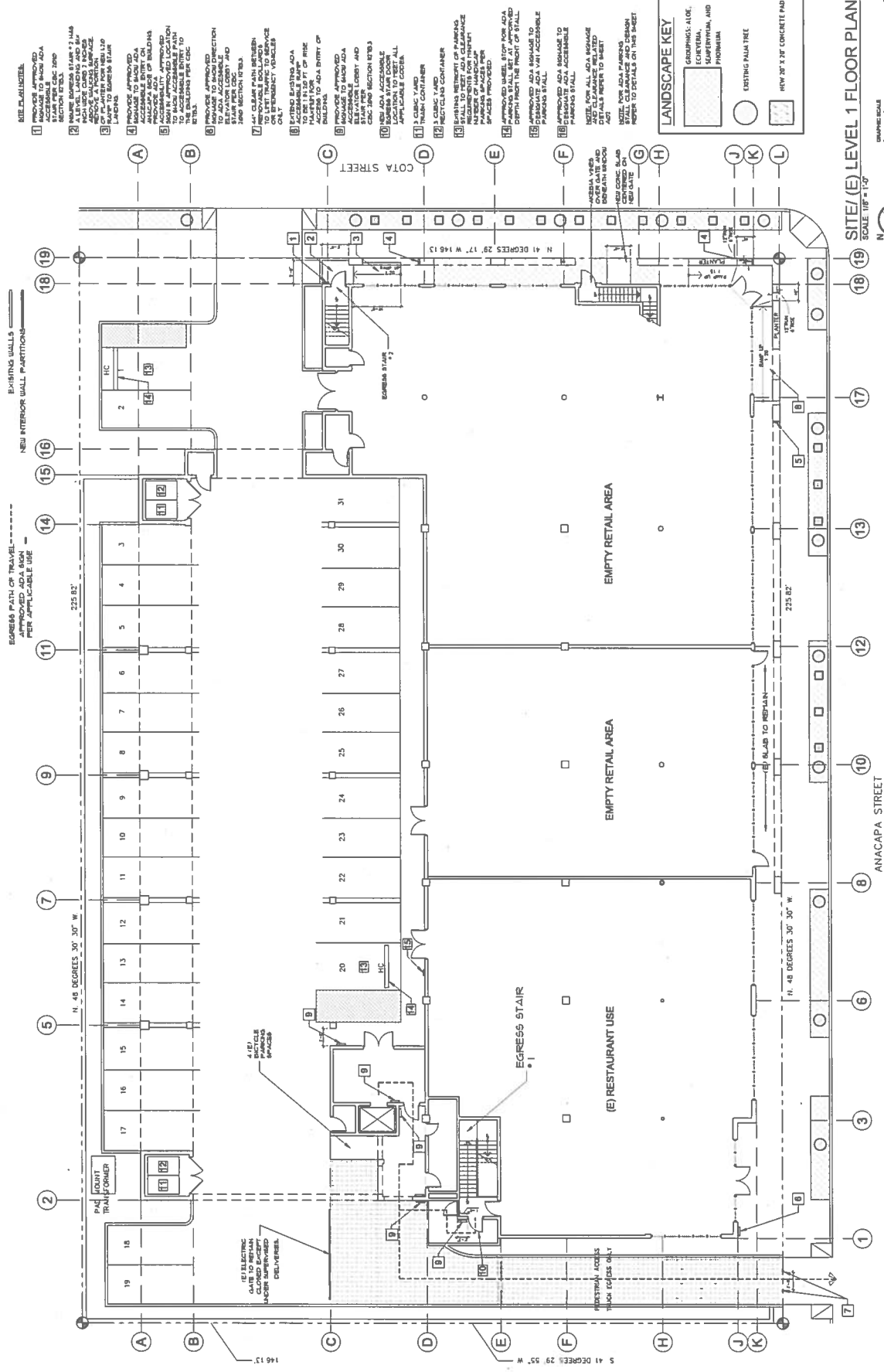


DATE	REVISION

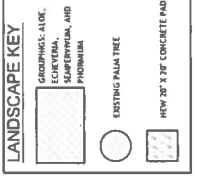
PLAN CHECK
SUBMITTAL

SITE /
EXISTING
LEVEL 1
FLOOR PLAN

A101

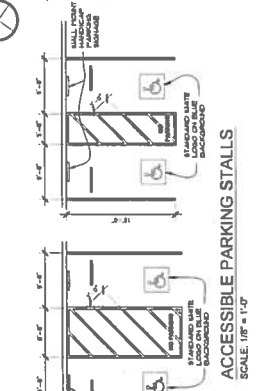


- NOTES:**
- PROVIDE APPROVED ADA ACCESSIBLE RAMP TO SECTION 2.100
 - REMOVE EXISTING STAIRS 2.100 AND 2.101. PROVIDE APPROVED ADA ACCESSIBLE RAMP TO SECTION 2.100
 - REMOVE EXISTING STAIRS 2.100 AND 2.101. PROVIDE APPROVED ADA ACCESSIBLE RAMP TO SECTION 2.100
 - REMOVE APPROVED ADA RAMP TO SECTION 2.100. PROVIDE APPROVED ADA ACCESSIBLE RAMP TO SECTION 2.100
 - REMOVE APPROVED ADA RAMP TO SECTION 2.100. PROVIDE APPROVED ADA ACCESSIBLE RAMP TO SECTION 2.100
 - REMOVE APPROVED ADA RAMP TO SECTION 2.100. PROVIDE APPROVED ADA ACCESSIBLE RAMP TO SECTION 2.100
 - REMOVE APPROVED ADA RAMP TO SECTION 2.100. PROVIDE APPROVED ADA ACCESSIBLE RAMP TO SECTION 2.100
 - REMOVE APPROVED ADA RAMP TO SECTION 2.100. PROVIDE APPROVED ADA ACCESSIBLE RAMP TO SECTION 2.100
 - REMOVE APPROVED ADA RAMP TO SECTION 2.100. PROVIDE APPROVED ADA ACCESSIBLE RAMP TO SECTION 2.100
 - REMOVE APPROVED ADA RAMP TO SECTION 2.100. PROVIDE APPROVED ADA ACCESSIBLE RAMP TO SECTION 2.100
 - REMOVE APPROVED ADA RAMP TO SECTION 2.100. PROVIDE APPROVED ADA ACCESSIBLE RAMP TO SECTION 2.100
 - REMOVE APPROVED ADA RAMP TO SECTION 2.100. PROVIDE APPROVED ADA ACCESSIBLE RAMP TO SECTION 2.100
 - REMOVE APPROVED ADA RAMP TO SECTION 2.100. PROVIDE APPROVED ADA ACCESSIBLE RAMP TO SECTION 2.100
 - REMOVE APPROVED ADA RAMP TO SECTION 2.100. PROVIDE APPROVED ADA ACCESSIBLE RAMP TO SECTION 2.100
 - REMOVE APPROVED ADA RAMP TO SECTION 2.100. PROVIDE APPROVED ADA ACCESSIBLE RAMP TO SECTION 2.100

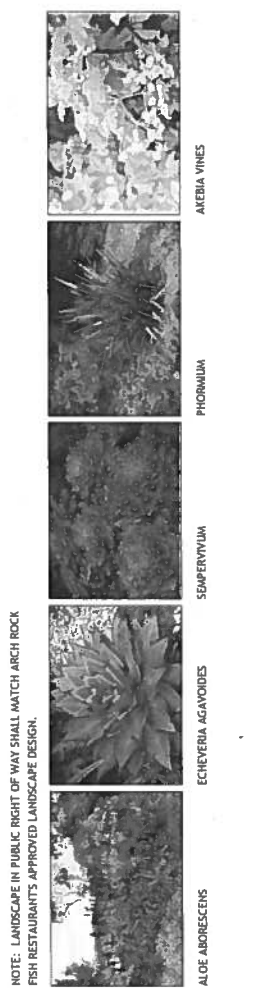


SITE/(E) LEVEL 1 FLOOR PLAN
 SCALE 1/8" = 1'-0"
 GRAPHIC SCALE

- ADA PARKING DETAIL NOTES:**
- ALL UNPAVED AREAS SHALL BE PAVED TO MEET ADA REQUIREMENTS.
 - UNPAVED AREAS SHALL BE PAVED TO MEET ADA REQUIREMENTS.
 - UNPAVED AREAS SHALL BE PAVED TO MEET ADA REQUIREMENTS.
 - UNPAVED AREAS SHALL BE PAVED TO MEET ADA REQUIREMENTS.
 - UNPAVED AREAS SHALL BE PAVED TO MEET ADA REQUIREMENTS.
 - UNPAVED AREAS SHALL BE PAVED TO MEET ADA REQUIREMENTS.
 - UNPAVED AREAS SHALL BE PAVED TO MEET ADA REQUIREMENTS.
 - UNPAVED AREAS SHALL BE PAVED TO MEET ADA REQUIREMENTS.
 - UNPAVED AREAS SHALL BE PAVED TO MEET ADA REQUIREMENTS.
 - UNPAVED AREAS SHALL BE PAVED TO MEET ADA REQUIREMENTS.
 - UNPAVED AREAS SHALL BE PAVED TO MEET ADA REQUIREMENTS.
 - UNPAVED AREAS SHALL BE PAVED TO MEET ADA REQUIREMENTS.
 - UNPAVED AREAS SHALL BE PAVED TO MEET ADA REQUIREMENTS.
 - UNPAVED AREAS SHALL BE PAVED TO MEET ADA REQUIREMENTS.
 - UNPAVED AREAS SHALL BE PAVED TO MEET ADA REQUIREMENTS.



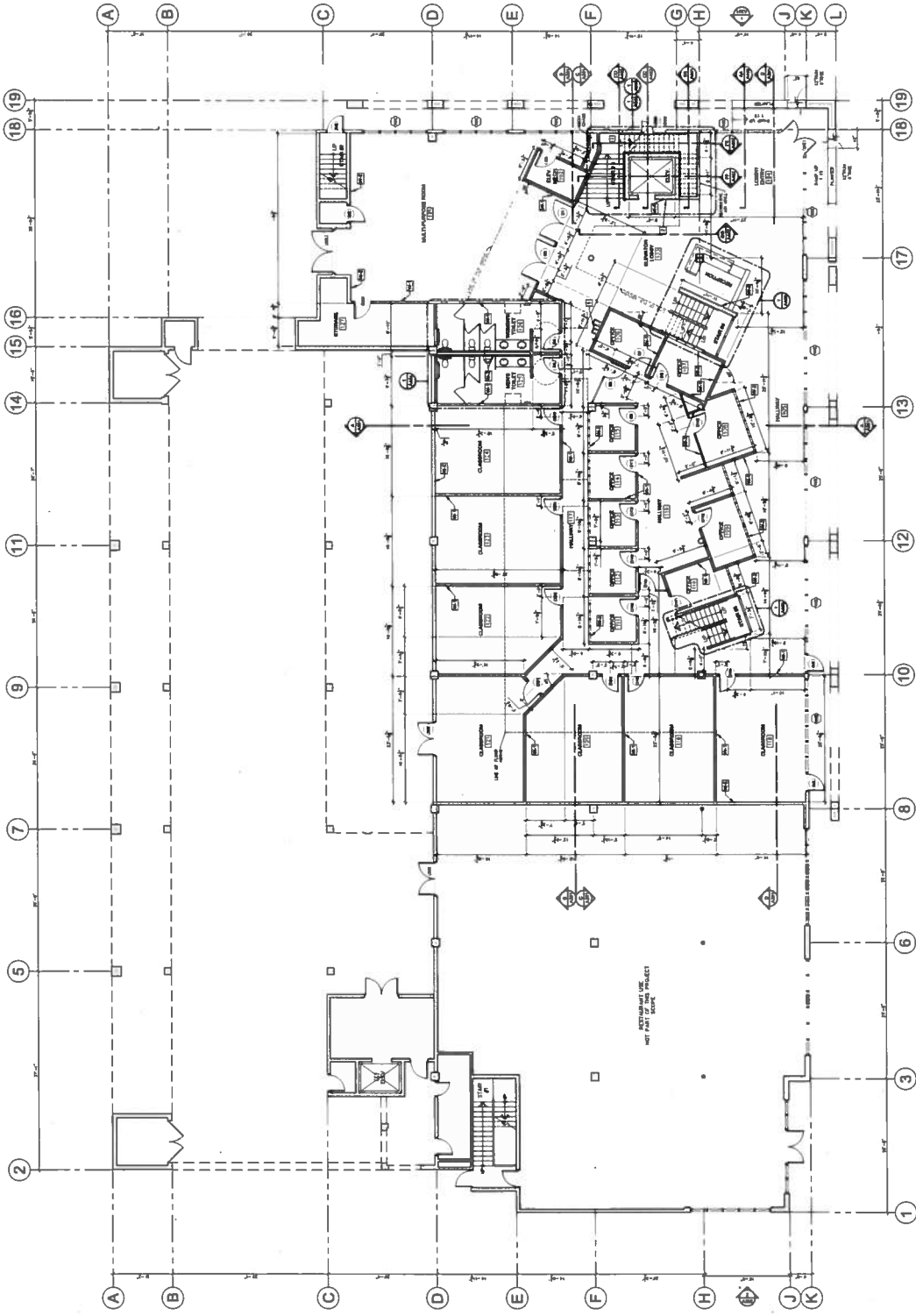
ACCESSIBLE PARKING STALLS
 SCALE 1/8" = 1'-0"



NOTE: LANDSCAPE IN PUBLIC RIGHT OF WAY SHALL MATCH ARCH ROCK FISH RESTAURANTS APPROVED LANDSCAPE DESIGN.

FLOOR PLAN NOTES

- 1 ALL AREAS SHALL BE ACCESSIBLE PER ADA COMPLIANCE
- 2 SEE SHEETS LANS AND ANR FOR ELEVATOR CONTROLS AND ELEVATOR PLUMBING AND CABLES (ELEV)
- 3 SEE SHEETS LANS AND ANR FOR ELEVATOR CONTROLS AND ELEVATOR PLUMBING AND CABLES (ELEV)



WALL TYPE LEGEND

W-1	3" x 8" STEEL STUD
W-2	3" GYPSUM PANEL/CLAY/ROCK WOOL INSULATION
W-3	3" x 4" STEEL STUD
W-4	WALL WITH 1/2" GYPSUM BOARD
W-5	RECEPTION CORE WALL
W-6	RECEPTION CORE WALL
W-7	BALCONY / HANDRAIL
W-8	RECEPTION WALL
W-9	EXISTING WALL

LEVEL 1 FLOOR PLAN
SCALE: 1/8" = 1'-0"



LEVEL 1
FLOOR PLAN

A103

ALL RIGHTS RESERVED KUPREC ARCHITECTS P.C. 2011

PLAN CHECK
SUBMITTAL

DATE	REVISION

ANTIOCH UNIVERSITY
602 ANACAPA STREET
SANTA BARBARA, CA, 93101
APN: 031-151-017



1725 Coast Village Drive
Santa Barbara, CA, 93108
PHONE: 805.963.5170
FAX: 805.963.5176
WWW.ANTIOCHUNIVERSITY.COM





DATE	REVISION	BY	CHKD

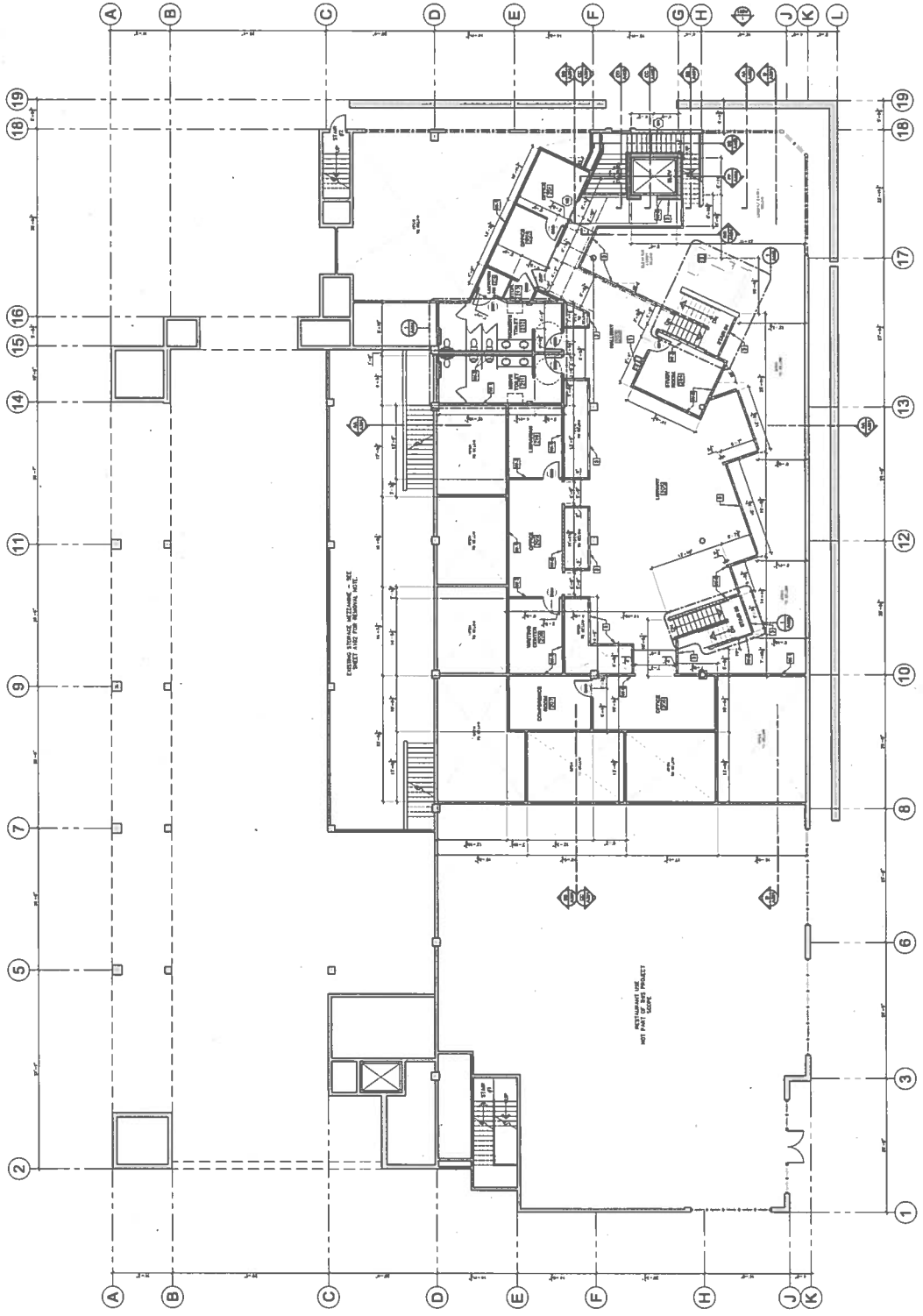
PLAN CHECK
 SUBMITTAL

LEVEL 2
 FLOOR PLAN

A104

ALL RIGHTS RESERVED HANSEN ARCHITECTS P.C. 2011

- FLOOR PLAN NOTES**
1. REFER TO ALL ACCESSIBLE
 2. SEE SHEET 104-101 FOR
 3. SEE SHEET 104-102 FOR
 4. SEE SHEET 104-103 FOR
 5. SEE SHEET 104-104 FOR
 6. SEE SHEET 104-105 FOR
 7. SEE SHEET 104-106 FOR
 8. SEE SHEET 104-107 FOR
 9. SEE SHEET 104-108 FOR
 10. SEE SHEET 104-109 FOR
 11. SEE SHEET 104-110 FOR
 12. SEE SHEET 104-111 FOR
 13. SEE SHEET 104-112 FOR
 14. SEE SHEET 104-113 FOR
 15. SEE SHEET 104-114 FOR
 16. SEE SHEET 104-115 FOR
 17. SEE SHEET 104-116 FOR
 18. SEE SHEET 104-117 FOR
 19. SEE SHEET 104-118 FOR
 20. SEE SHEET 104-119 FOR
 21. SEE SHEET 104-120 FOR
 22. SEE SHEET 104-121 FOR
 23. SEE SHEET 104-122 FOR
 24. SEE SHEET 104-123 FOR
 25. SEE SHEET 104-124 FOR
 26. SEE SHEET 104-125 FOR
 27. SEE SHEET 104-126 FOR
 28. SEE SHEET 104-127 FOR
 29. SEE SHEET 104-128 FOR
 30. SEE SHEET 104-129 FOR
 31. SEE SHEET 104-130 FOR
 32. SEE SHEET 104-131 FOR
 33. SEE SHEET 104-132 FOR
 34. SEE SHEET 104-133 FOR
 35. SEE SHEET 104-134 FOR
 36. SEE SHEET 104-135 FOR
 37. SEE SHEET 104-136 FOR
 38. SEE SHEET 104-137 FOR
 39. SEE SHEET 104-138 FOR
 40. SEE SHEET 104-139 FOR
 41. SEE SHEET 104-140 FOR
 42. SEE SHEET 104-141 FOR
 43. SEE SHEET 104-142 FOR
 44. SEE SHEET 104-143 FOR
 45. SEE SHEET 104-144 FOR
 46. SEE SHEET 104-145 FOR
 47. SEE SHEET 104-146 FOR
 48. SEE SHEET 104-147 FOR
 49. SEE SHEET 104-148 FOR
 50. SEE SHEET 104-149 FOR
 51. SEE SHEET 104-150 FOR
 52. SEE SHEET 104-151 FOR
 53. SEE SHEET 104-152 FOR
 54. SEE SHEET 104-153 FOR
 55. SEE SHEET 104-154 FOR
 56. SEE SHEET 104-155 FOR
 57. SEE SHEET 104-156 FOR
 58. SEE SHEET 104-157 FOR
 59. SEE SHEET 104-158 FOR
 60. SEE SHEET 104-159 FOR
 61. SEE SHEET 104-160 FOR
 62. SEE SHEET 104-161 FOR
 63. SEE SHEET 104-162 FOR
 64. SEE SHEET 104-163 FOR
 65. SEE SHEET 104-164 FOR
 66. SEE SHEET 104-165 FOR
 67. SEE SHEET 104-166 FOR
 68. SEE SHEET 104-167 FOR
 69. SEE SHEET 104-168 FOR
 70. SEE SHEET 104-169 FOR
 71. SEE SHEET 104-170 FOR
 72. SEE SHEET 104-171 FOR
 73. SEE SHEET 104-172 FOR
 74. SEE SHEET 104-173 FOR
 75. SEE SHEET 104-174 FOR
 76. SEE SHEET 104-175 FOR
 77. SEE SHEET 104-176 FOR
 78. SEE SHEET 104-177 FOR
 79. SEE SHEET 104-178 FOR
 80. SEE SHEET 104-179 FOR
 81. SEE SHEET 104-180 FOR
 82. SEE SHEET 104-181 FOR
 83. SEE SHEET 104-182 FOR
 84. SEE SHEET 104-183 FOR
 85. SEE SHEET 104-184 FOR
 86. SEE SHEET 104-185 FOR
 87. SEE SHEET 104-186 FOR
 88. SEE SHEET 104-187 FOR
 89. SEE SHEET 104-188 FOR
 90. SEE SHEET 104-189 FOR
 91. SEE SHEET 104-190 FOR
 92. SEE SHEET 104-191 FOR
 93. SEE SHEET 104-192 FOR
 94. SEE SHEET 104-193 FOR
 95. SEE SHEET 104-194 FOR
 96. SEE SHEET 104-195 FOR
 97. SEE SHEET 104-196 FOR
 98. SEE SHEET 104-197 FOR
 99. SEE SHEET 104-198 FOR
 100. SEE SHEET 104-199 FOR
 101. SEE SHEET 104-200 FOR



WALL TYPE LEGEND

(W-1)	2 X 8 STEEL STUD
(W-2)	2 X 4 STEEL STUD
(W-3)	2 X 6 STEEL STUD
(W-4)	2 X 8 STEEL STUD
(W-5)	2 X 10 STEEL STUD
(W-6)	2 X 12 STEEL STUD
(W-7)	2 X 14 STEEL STUD
(W-8)	2 X 16 STEEL STUD
(W-9)	2 X 18 STEEL STUD
(W-10)	2 X 20 STEEL STUD
(W-11)	2 X 22 STEEL STUD
(W-12)	2 X 24 STEEL STUD
(W-13)	2 X 26 STEEL STUD
(W-14)	2 X 28 STEEL STUD
(W-15)	2 X 30 STEEL STUD
(W-16)	2 X 32 STEEL STUD
(W-17)	2 X 34 STEEL STUD
(W-18)	2 X 36 STEEL STUD
(W-19)	2 X 38 STEEL STUD
(W-20)	2 X 40 STEEL STUD
(W-21)	2 X 42 STEEL STUD
(W-22)	2 X 44 STEEL STUD
(W-23)	2 X 46 STEEL STUD
(W-24)	2 X 48 STEEL STUD
(W-25)	2 X 50 STEEL STUD
(W-26)	2 X 52 STEEL STUD
(W-27)	2 X 54 STEEL STUD
(W-28)	2 X 56 STEEL STUD
(W-29)	2 X 58 STEEL STUD
(W-30)	2 X 60 STEEL STUD
(W-31)	2 X 62 STEEL STUD
(W-32)	2 X 64 STEEL STUD
(W-33)	2 X 66 STEEL STUD
(W-34)	2 X 68 STEEL STUD
(W-35)	2 X 70 STEEL STUD
(W-36)	2 X 72 STEEL STUD
(W-37)	2 X 74 STEEL STUD
(W-38)	2 X 76 STEEL STUD
(W-39)	2 X 78 STEEL STUD
(W-40)	2 X 80 STEEL STUD
(W-41)	2 X 82 STEEL STUD
(W-42)	2 X 84 STEEL STUD
(W-43)	2 X 86 STEEL STUD
(W-44)	2 X 88 STEEL STUD
(W-45)	2 X 90 STEEL STUD
(W-46)	2 X 92 STEEL STUD
(W-47)	2 X 94 STEEL STUD
(W-48)	2 X 96 STEEL STUD
(W-49)	2 X 98 STEEL STUD
(W-50)	2 X 100 STEEL STUD

LEVEL 2 FLOOR PLAN
 SCALE: 1/8" = 1'-0"



